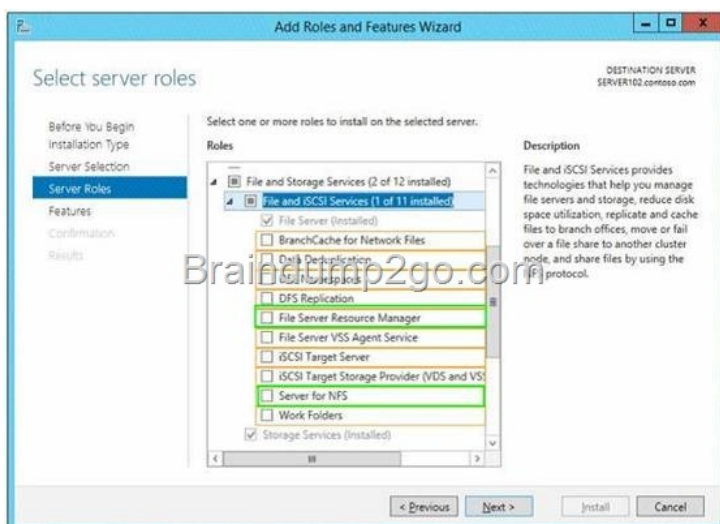


## Official 2014 Latest Microsoft 70-412 Exam Dump Free Download(281-290)!

**QUESTION 281** Your network contains an Active Directory forest named contoso.com. Users frequently access the website of an external partner company. The URL of the website is <http://partners.adatum.com>. The partner company informs you that it will perform maintenance on its Web server and that the IP addresses of the Web server will change. After the change is complete, the users on your internal network report that they fail to access the website. However, some users who work from home report that they can access the website. You need to ensure that your DNS servers can resolve partners.adatum.com to the correct IP address immediately. What should you do? A. Run dnscmd and specify the CacheLockingPercent parameter. B. Run Set-DnsServerGlobalQueryBlockList. C. Run ipconfig and specify the Renew parameter. D. Run Set-DnsServerCache. Answer: A Explanation: \* To configure cache locking using a command line Open an elevated command prompt. Type the following command, and then press ENTER: dnscmd /Config /CacheLockingPercent <percent> Restart the DNS Server service. \* Parameter <percent> Optional.Specifies the cache locking percent, from 0 to 100 in decimal format. If no value is entered, the cache locking percent is set to 0. **QUESTION 282** You have a server named Server1. You install the IP Address Management (IPAM) Server feature on Server1. You need to provide a user named User1 with the ability to set the access scope of all the DHCP servers that are managed by IPAM. The solution must use the principle of least privilege. Which user role should you assign to User1? A. DNS Record Administrator Role B. IPAM DHCP Reservations Administrator Role C. IPAM Administrator Role D. IPAM DHCP Administrator Role Answer: C Explanation: When you install IPAM Server, the following local role-based IPAM security groups are created: IPAM Users IPAM MSM Administrators IPAM ASM Administrators IPAM IP Audit Administrators IPAM Administrators **QUESTION 283** You have a virtual machine named VM1 that runs on a host named Host1. You configure VM1 to replicate to another host named Host2. Host2 is located in the same physical location as Host1. You need to add an additional replica of VM1. The replica will be located in a different physical site. What should you do? A. From VM1 on Host2, click Extend Replication. B. On Host1, configure the Hyper-V settings. C. From VM1 on Host1, click Extend Replication. D. On Host2, configure the Hyper-V settings. Answer: A **QUESTION 284** Hotspot Question You have a file server named Server1 that runs Windows Server 2012 R2. You need to ensure that you can use the NFS Share - Advanced option from the New Share Wizard in Server Manager. Which two role services should you install? To answer, select the appropriate two role services in the answer area.

Answer:



] QUESTION 285 Your network contains 20 iSCSI storage appliances that will provide storage for 50 Hyper-V hosts running Windows Server 2012 R2. You need to configure the storage for the Hyper-V hosts. The solution must minimize administrative effort. What should you do first? A. Install the iSCSI Target Server role service and configure iSCSI targets. B. Install the iSNS Server service feature and create a Discovery Domain. C. Start the Microsoft iSCSI Initiator Service and configure the iSCSI Initiator Properties. D. Install the Multipath I/O (MPIO) feature and configure the MPIO Properties. Answer: C QUESTION 286 Drag and Drop Question You have a server that runs Windows Server 2012 R2. You create a new work folder named Share1. You need to configure Share1 to meet the following requirements: Ensure that all synchronized copies of Share1 are encrypted. Ensure that clients synchronize to Share1 every 30 minutes. Ensure that Share1 inherits the NTFS permissions of the parent folder. Which cmdlet should you use to achieve each requirement? To answer, drag the appropriate cmdlets to the correct requirements. Each cmdlet may be used once, more than once, or not at all. You may need to drag the split bar between panes or scroll to view content.

Answer:

Cmdlets	Answer Area
Enable-SyncShare	Ensure that all synchronized copies of Share1 are encrypted. <b>Set-SyncDevicePolicy</b>
New-SyncDevicePolicy	Ensure that clients synchronize to Share1 every 30 minutes. <b>Set-SyncServerSettings</b>
New-SyncShare	Ensure that Share1 inherits the NTFS permissions of the parent folder. <b>Set-SyncShare</b>
Set-SyncDevicePolicy	
Set-SyncServerSettings	
Set-SyncShare	

] QUESTION 287 You create a new virtual disk in a storage pool by using the New Virtual Disk Wizard. You discover that the new virtual disk has a write-back cache of 1 GB. You need to ensure that the virtual disk has a write-back cache of 5 GB. What should you do? A. Detach the virtual disk, and then run the Resize-VirtualDisk cmdlet. B. Detach the virtual disk, and then run the Set-VirtualDisk cmdlet. C. Delete the virtual disk, and then run the New-StorageSubSystemVirtualDisk cmdlet. D. Delete the virtual disk, and then run the New-VirtualDisk cmdlet. Answer: D QUESTION 288 Drag and Drop Question Your network contains an Active Directory domain named contoso.com. The domain contains a server named Server1 that runs Windows Server 2012 R2. You plan to install the Active Directory Federation Services server role on Server1 to allow for Workplace Join. You run nslookup enterprise registration and you receive the following results:

```
Server: dcl.contoso.com
Address: 192.168.0.100

Name: adfs1.contoso.com
Address: 192.168.0.70
Aliases: enterpriseregistration.contoso.com
```

You need to create a certificate request for Server1 to support the Active Directory Federation Services (AD FS) installation. How should you configure the certificate request? To answer, drag the appropriate names to the correct locations. Each name may be used once, more than once, or not at all. You may need to drag the split bar between panes or scroll to view content.

Answer:

Names	Answer Area
Adfs1.contoso.com	Subject name (CN): <b>Adfs1.contoso.com</b>
Contoso.com	Subject Alternative Name (DNS): <b>Adfs1.contoso.com</b>
Dcl.contoso.com	Subject Alternative Name (DNS): <b>Enterpriseregistration.contoso.com</b>
Enterpriseregistration.contoso.com	
Server1.contoso.com	

] QUESTION 289 Your network contains an Active Directory domain named contoso.com. The domain contains servers named Server1 and Server2 that run Windows Server 2012 R2. Server1 has the Active Directory Federation Services server role installed. Server2 is a file server. Your company introduces a Bring Your Own Device (BYOD) policy. You need to ensure that users can use a personal device to access domain resources by using Single Sign-On (SSO) while they are connected to the internal network. Which two actions should you perform? (Each correct answer presents part of the solution. Choose two.) A. Enable the Device Registration Service in Active Directory. B. Publish the Device Registration Service by using a Web Application Proxy. C. Configure Active Directory Federation Services (AD FS) for the Device Registration Service. D. Create and configure a sync share on Server2. E. Install the Work Folders role service on Server2. Answer: AC QUESTION 290 Drag and Drop Question You have two failover clusters named Cluster1 and Cluster2. All of the nodes in both of the clusters run Windows Server 2012 R2. Cluster1 hosts two virtual machines named VM1 and VM2. You plan to configure VM1 and VM2 as nodes in a new failover cluster named Cluster3. You need to configure the witness disk for Cluster3 to be hosted on Cluster2. Which three actions should you perform in sequence? To answer, move the appropriate three actions from the list of actions to the answer area and arrange them in the correct order.

	Answer Area
On Cluster2, install the Scale-Out File Server for application data (Scale-Out File Server) option.	
On Cluster1, add a SCSI hard disk drive to VM1 and VM2.	
On Cluster1, add an iSCSI hard disk drive to VM1 and VM2.	
On Cluster2, install the File Server role service.	
On Cluster2, install the File Server for general use option.	

Answer:

	Answer Area
On Cluster2, install the Scale-Out File Server for application data (Scale-Out File Server) option.	On Cluster1, add an iSCSI hard disk drive to VM1 and VM2.
On Cluster1, add a SCSI hard disk drive to VM1 and VM2.	
On Cluster1, add an iSCSI hard disk drive to VM1 and VM2.	On Cluster2, install the File Server role service.
On Cluster2, install the File Server role service.	
On Cluster2, install the File Server for general use option.	On Cluster2, install the Scale-Out File Server for application data (Scale-Out File Server) option.

] Passing Microsoft 70-412 Exam successfully in a short time! Just using Braindump2go's Latest Microsoft 70-412 Dump: <http://www.braindump2go.com/70-412.html>