

Official 2014 Latest Microsoft 70-410 Exam Dump Free Download(391-400)!

QUESTION 391 Hotspot Question You have a server named Server1 that runs Windows Server 2012 R2. You need to switch Server1 to a Server Core installation of Windows Server 2012 R2. What command should you run? To answer, select the appropriate options in the answer area.

Answer Area

Braindump2go.com

-Restart

Add-WindowsFeature	Desktop-Experience
Install-WindowsFeature	Server-Gui-Mgmt-Infra
Uninstall-WindowsFeature	Server-Gui-Shell

Answer:

Answer Area

Braindump2go.com

-Restart

Add-WindowsFeature	Desktop-Experience
Install-WindowsFeature	Server-Gui-Mgmt-Infra
Uninstall-WindowsFeature	Server-Gui-Shell

QUESTION 392 You have a server named Server1 that runs Windows Server 2012 R2. You plan to use Windows PowerShell Desired State Configuration (DSC) to confirm that the Application Identity service is running on all file servers. You define the following configuration in the Windows PowerShell Integrated Scripting Environment (ISE):

```
Configuration Configuration1
{
    Service Service1
    {
        Name = "AppIDSvc"
        StartupType = "Automatic"
    }
}
```

You need to use DSC to configure Server1 as defined in the configuration. What should you run first? A. Service 1 B.

Test-DscConfiguration C. Start-DscConfiguration D. Configuration1 Answer: D QUESTION 393 Drag and Drop Question You are configuring a multi-subnet IPv6 network for a regional office. The corporate network administrator allocates the 2001:0db8:1234:0800::/54 address space for your use. You need to identify network IDs of the first and last subnets that you will be able to create at the office. Which network IDs should you identify? To answer, drag the appropriate network IDs to the correct subnets. Each network ID may be used once, more than once, or not at all. You may need to drag the split bar between panes or scroll to view content.

Network IDs

2001:0db8:1234:0800::/54

2001:0db8:1234:0800::/64

2001:0db8:1234:0801::/54

2001:0db8:1234:0801::/64

2001:0db8:1234:08ff:/54

2001:0db8:1234:08ff:/64

2001:0db8:1234:0bff:/54

2001:0db8:1234:0bff:/64

Answer Area

First subnet: Network ID

Last subnet: Network ID

Answer:

Network IDs

2001:0db8:1234:0800::/54

2001:0db8:1234:0800::/64

2001:0db8:1234:0801::/54

2001:0db8:1234:0801::/64

2001:0db8:1234:08ff:/54

2001:0db8:1234:08ff:/64

2001:0db8:1234:0bff:/54

2001:0db8:1234:0bff:/64

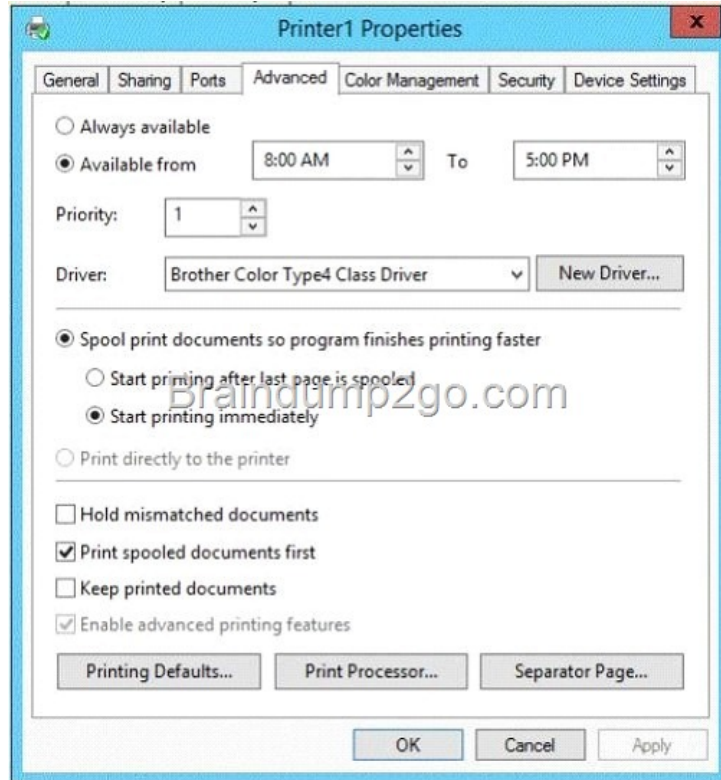
Answer Area

First subnet: 2001:0db8:1234:0800::/64

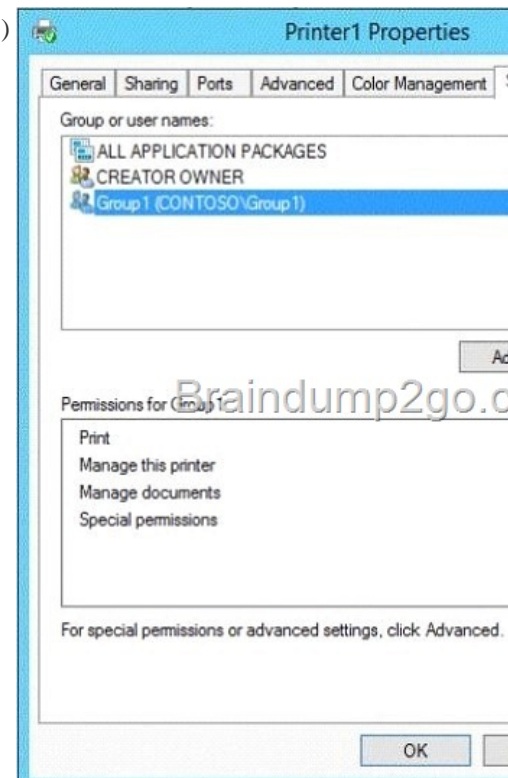
Last subnet: 2001:0db8:1234:0bff:/64

QUESTION 394 Your network contains an Active Directory domain named contoso.com. The domain contains a DHCP server named Server1 that runs Windows Server 2012 R2. You create a DHCP scope named Scope1. The scope has a start address of 192.168.1.10, an end address of 192.168.1.50, and a subnet mask of 255.255.255.192. You need to ensure that Scope1 has a subnet mask of 255.255.255.0. What should you do first? A. From the DHCP console, reconcile Scope1. B. From the DHCP console, delete Scope1. C. From the DHCP console, modify the Scope Options of Scope1. D. From Windows PowerShell, run the Set-DhcpServerv4Scope cmdlet. Answer: B

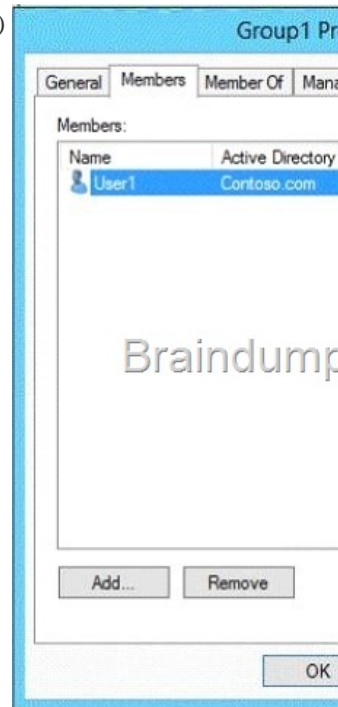
QUESTION 395 Hotspot Question You have a print server named Server1 that runs Windows Server 2012 R2. On Server1, you create and share a printer named Printer1. The Advanced settings of Printer1 are shown in the Advanced exhibit. (Click the Exhibit button.)



The Security settings of Printer1 are shown in the Security exhibit. (Click the Exhibit button.)



The Members settings of a group named Group1 are shown in the Group1 exhibit. (Click the Exhibit button.)



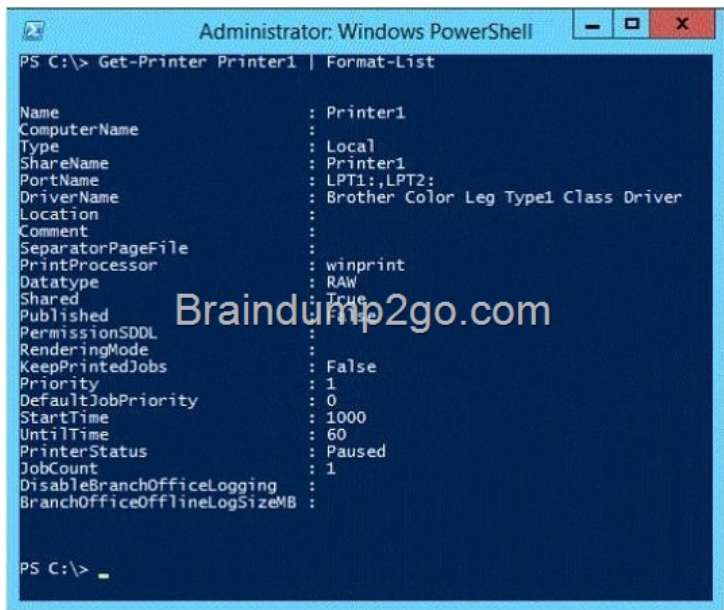
Select Yes if the statement can be shown to be true based on the available information; otherwise select No. Each correct selection is worth one point.

	Yes	No
User1 can print on Printer1 on Monday at 18:00.	<input type="radio"/>	<input type="radio"/>
User2 can print on Printer1 on Friday at 14:00.	<input type="radio"/>	<input type="radio"/>
User1 can print on Printer1 on Sunday at 11:00.	<input type="radio"/>	<input type="radio"/>

Answer:

	Yes	No
User1 can print on Printer1 on Monday at 18:00.	<input type="radio"/>	<input checked="" type="radio"/>
User2 can print on Printer1 on Friday at 14:00.	<input type="radio"/>	<input checked="" type="radio"/>
User1 can print on Printer1 on Sunday at 11:00.	<input checked="" type="radio"/>	<input type="radio"/>

QUESTION 396 Hotspot Question A printer named Printer1 is configured as shown in the exhibit. (Click the Exhibit button.)



To answer, complete each statement according to the information presented in the exhibit. Each correct selection is worth one point.

Answer Area

If a user prints a document to Printer1, the document will ...

Users can submit print jobs to Printer1 ...

Answer:

Answer Area

If a user prints a document to Printer1, the document will ...

Users can submit print jobs to Printer1 ...

] QUESTION 397 Hotspot Question Your network contains an Active Directory domain named contoso.com. All servers run Windows Server 2012 R2. You need to add a user named User1 to a group named ServerAdmins. What command should you run? To answer, select the appropriate options in the answer area.

Answer Area

-identity

Add-AdGroupMember
Add-Member
Set-AdGroup
Set-AdUser

ServerAdmins
User1

ServerAdmins
User1

Answer:

Answer Area

-identity

Add-AdGroupMember
 Add-Member
 Set-AdGroup
 Set-AdUser

ServerAdmins
 User1

ServerAdmins
 User1

QUESTION 398 Hotspot Question You have a DHCP server named Server1 that runs Windows Server 2012 R2. On Server1, you run the commands as shown in the exhibit. (Click the Exhibit button.)

```

Administrator: Windows PowerShell
PS C:\> Add-DhcpServerv4Scope -Name Scope1 -StartRange 192.168.10.11 -EndRange 192.168.10.200 -SubnetMask 255.255.255.0
PS C:\> Add-DhcpServerv4Scope -Name Scope2 -StartRange 192.168.15.11 -EndRange 192.168.15.200 -SubnetMask 255.255.255.0
PS C:\> Add-DhcpServerv4Reservation -ScopeId 192.168.10.0 -IPAddress 192.168.10.15 -ClientId AABBCDDEEFF
PS C:\> Set-DhcpServerv4Scope -ScopeId 192.168.15.0 -StartRange 192.168.15.11 -EndRange 192.168.15.230
PS C:\> Add-DhcpServerv4ExclusionRange -ScopeId 192.168.15.0 -StartRange 192.168.15.200 -EndRange 192.168.15.30
PS C:\> Set-DhcpServerv4OptionValue -DnsServer 192.168.1.250 -Reservation 192.168.10.15
PS C:\> Set-DhcpServerv4OptionValue -DnsServer 192.168.15.250 -Router 192.168.15.1 -ScopeId 192.168.15.0
PS C:\> Set-DhcpServerv4OptionValue -DnsServer 192.168.10.250
PS C:\>
    
```

To answer, complete each statement according to the information presented in the exhibit. Each correct selection is worth one point.

A computer that has a MAC address of AABBCDDEEFF will get the DNS server address of ... from Server1 when the computer is connected to the 192.168.15.

172.16.1.250
 192.168.10.250
 192.168.15.250

Server1 can lease ... addresses on the 192.168.15.0/24 segment.

10
 210
 220
 254

Answer:

A computer that has a MAC address of AABBCDDEEFF will get the DNS server address of ... from Server1 when the computer is connected to the 192.168.15.

172.16.1.250
 192.168.10.250
 192.168.15.250

Server1 can lease ... addresses on the 192.168.15.0/24 segment.

10
 210
 220
 254

QUESTION 399 Drag and Drop Question You have a server named Server1 that runs Windows Server 2012 R2. You need to perform the following storage configuration tasks on Server1: - Bring a disk named Disk1 online. - Defragment a volume named Volume1. - Remove a disk named Disk2 from a storage pool named Pool1. Which cmdlet should you use to perform each task? To answer, drag the appropriate cmdlets to the correct tasks. Each cmdlet may be used once, more than once, or not at all. You may need to drag the split bar between panes or scroll to view content.

Cmdlets	Answer Area
Initialize-Disk	Bring a disk named Disk1 online. <input type="text" value="Cmdlet"/>
Optimize-Volume	Defragment a volume named Volume1. <input type="text" value="Cmdlet"/>
Remove-PhysicalDisk	Remove a disk named Disk2 from a storage pool named Pool1. <input type="text" value="Cmdlet"/>
Repair-Volume	
Set-Disk	
Set-PhysicalDisk	
Set-StoragePool	
Update-Disk	

Answer:

Cmdlets	Answer Area
Initialize-Disk	Bring a disk named Disk1 online. <input type="button" value="Set-Disk"/>
Optimize-Volume	Defragment a volume named Volume1. <input type="button" value="Optimize-Volume"/>
Remove-PhysicalDisk	Remove a disk named Disk2 from a storage pool named Pool1. <input type="button" value="Remove-PhysicalDisk"/>
Repair-Volume	
Set-Disk	
Set-PhysicalDisk	
Set-StoragePool	
Update-Disk	

QUESTION 400 Your network contains an Active Directory domain named contoso.com. You have a DHCP server named Server1 that runs Windows Server 2008. You install Windows Server 2012 R2 on a server named Server2. You install the DHCP Server server role on Server2. You need to migrate the DHCP services from Server1 to Server2. The solution must meet the following requirements: - Ensure that existing leases are migrated. - Prevent lease conflicts. Which three actions should you perform? (Each correct answer presents part of the solution. Choose three.) A. On Server1, run the Export-DhcpServer cmdlet. B. On Server1, run the Stop-Service cmdlet. C. On Server2, run the Receive-SmigServerData cmdlet. D. On Server2, run the Stop-Service cmdlet. E. On Server2, run the Import-DhcpServer cmdlet. F. On Server1, run the Send-SmigServerData cmdlet. Answer: ABE
Passing Microsoft 70-410 Exam successfully in a short time! Just using Braindump2go's Latest Microsoft 70-410 Dump:

<http://www.braindump2go.com/70-410.html>