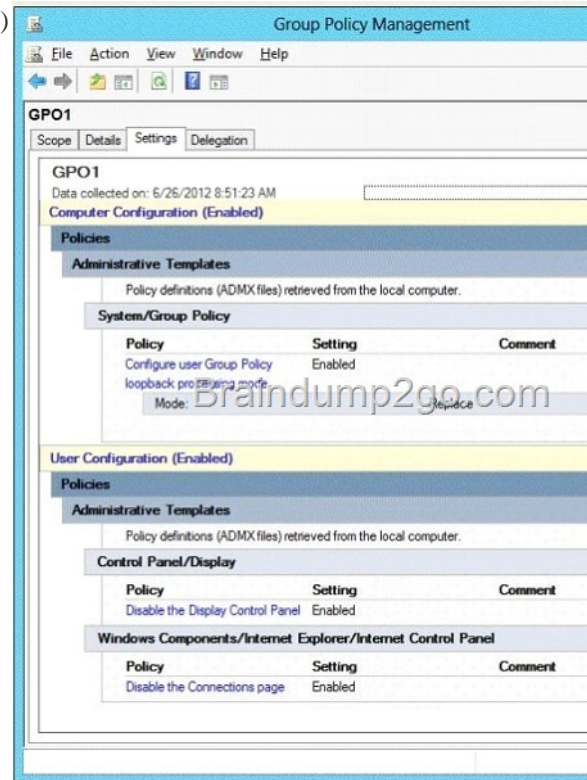


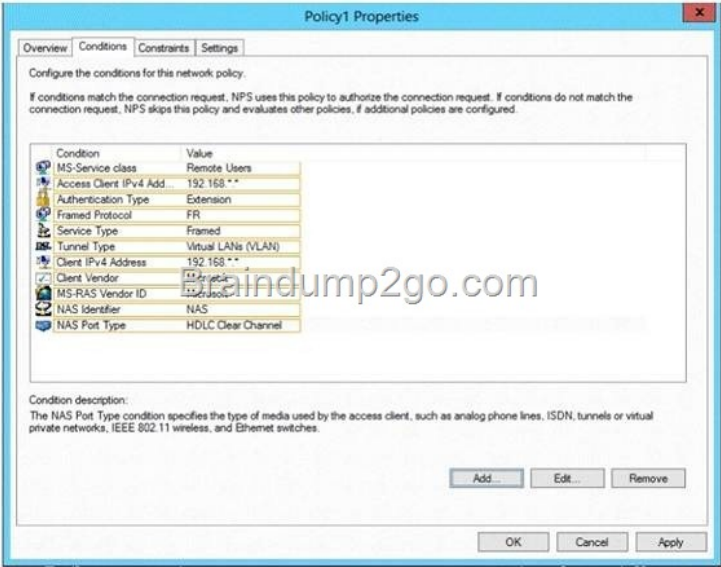
## Official 2014 Latest Microsoft 70-411 Exam Dump Free Download(271-280)!

QUESTION 271 Your network contains an Active Directory domain named contoso.com. The domain contains a server named Server1 that runs Windows Server 2012 R2. Server1 has the Remote Desktop Session Host role service installed. The computer account of Server1 resides in an organizational unit (OU) named OU1. You create and link a Group Policy object (GPO) named GPO1 to OU1. GPO1 is configured as shown in the exhibit. (Click the Exhibit button.)

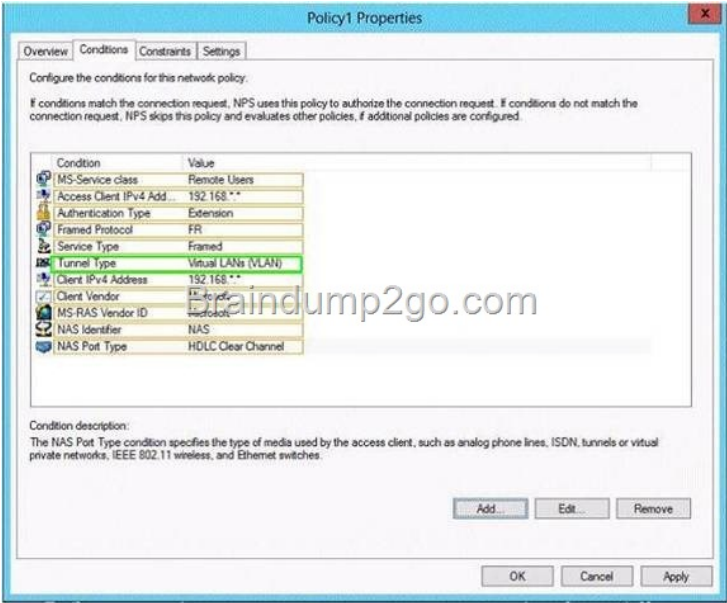


You need to prevent GPO1 from Applying to your user account when you log on to Server1. GPO1 must Apply to every other user who logs on to Server1. What should you configure? A. WMI Filtering B. Item-level Targeting C. Block Inheritance D. Security Filtering Answer: D QUESTION 272 Your network contains an Active Directory domain named contoso.com. The domain contains a domain controller named DC1 that runs Windows Server 2012 R2. DC1 is backed up daily. The domain has the Active Directory Recycle Bin enabled. During routine maintenance, you delete 500 inactive user accounts and 100 inactive groups. One of the deleted groups is named Group1. Some of the deleted user accounts are members of some of the deleted groups. For documentation purposes, you must provide a list of the members of Group1 before the group was deleted. You need to identify the names of the users who were members of Group1 prior to its deletion. You want to achieve this goal by using the minimum amount of administrative effort. What should you do first? A. Mount the most recent Active Directory backup. B. Perform an authoritative restore of Group1. C. Use the Recycle Bin to restore Group1. D. Reactivate the tombstone of Group1. Answer: A QUESTION 273 Your network contains an Active Directory domain named contoso.com. The domain contains two servers named Server1 and Server2. Both servers run Windows Server 2012 R2. For Server2, you are configuring constrained delegation to a third-party service named Service1 on Server1. When you attempt to add Service1 from Server1 to the delegation setting of Server2, you discover that Service1 is not listed in the Available services list. You need to ensure that you can add Service1 for constrained delegation. What should you do first? A. From the Services console, modify the properties of Service1 B. From ADSI Edit, create a serviceConnectionPoint (SCP) object C. From a command prompt, run the setspn.exe command D. From Active Directory Users and Computers, enable the Advanced Features option. Answer: A QUESTION 274 You have a file server named Server1 that runs Windows Server 2012 R2. Server1 has the File Server Resource Manager role service installed. Files created by users in the human resources department are assigned the Department classification property automatically. You are configuring a file management task named Task1 to remove user files that have not been accessed for 60 days or more. You need to ensure that Task1 only removes files that have a Department classification property of human resources. The solution must minimize administrative effort. What should you configure on Task1? A. Create a custom action. B. Configure a file screen. C. Create a classification rule. D. Create a condition. Answer: D QUESTION 275 Hotspot Question Your network contains an Active

Directory domain named contoso.com. The domain contains a server named Server1 that runs Windows Server 2012 R2 and has the Network Policy Server role service installed. An administrator creates a Network Policy Server (NPS) network policy named Policy1. You need to ensure that Policy1 applies to L2TP connections only. Which condition should you modify? To answer, select the appropriate object in the answer area.



Answer:



] QUESTION 276 Your network contains two DNS servers named Server1 and Server2 that run Windows Server 2012 R2. Server1 hosts a primary zone for contoso.com. Server2 hosts a secondary zone for contoso.com. You need to ensure that Server2 replicates changes to the contoso.com zone every five minutes. Which setting should you modify in the start of authority (SOA) record? A. Retry interval B. Minimum (default) TTL C. Expires after D. Refresh interval Answer: D QUESTION 277 Your network contains an Active Directory domain named contoso.com. All domain controllers run Windows Server 2012 R2. An organizational unit (OU) named OU1 contains 200 client computers that run Windows 8 Enterprise. A Group Policy object (GPO) named GPO1 is linked to OU1. You make a change to GPO1. You need to force all of the computers in OU1 to refresh their Group Policy settings immediately. The solution must minimize administrative effort. Which tool should you use? A. The Secedit command B. The Set-AdComputer cmdlet C. Active Directory Users and Computers D. The Invoke-GpUpdate cmdlet Answer: D Explanation: Invoke-GPUpdate Schedule a remote Group Policy refresh (gpupdate) on the specified computer. Applies To: Windows Server 2012 R2 The Invoke-GPUpdate cmdlet refreshes Group Policy settings, including security settings that are set on remote computers by scheduling the running of the Gpupdate command on a remote computer. You can combine this cmdlet in a scripted fashion to schedule the Gpupdate command on a group of computers. The refresh can be scheduled to immediately start a refresh of policy

settings or wait for a specified period of time, up to a maximum of 31 days. To avoid putting a load on the network, the refresh times will be offset by a random delay. Note: Group Policy is a complicated infrastructure that enables you to apply policy settings to remotely configure a computer and user experience within a domain. When the Resultant Set of Policy settings does not conform to your expectations, a best practice is to first verify that the computer or user has received the latest policy settings. In previous versions of Windows, this was accomplished by having the user run GPUUpdate.exe on their computer. With Windows Server 2012 R2 and Windows 8, you can remotely refresh Group Policy settings for all computers in an organizational unit (OU) from one central location by using the Group Policy Management Console (GPMC). Or you can use the Invoke-GPUUpdate Windows PowerShell cmdlet to refresh Group Policy for a set of computers, including computers that are not within the OU structure--for example, if the computers are located in the default computers container. The remote Group Policy refresh updates all Group Policy settings, including security settings that are set on a group of remote computers, by using the functionality that is added to the context menu for an OU in the Group Policy Management Console (GPMC). When you select an OU to remotely refresh the Group Policy settings on all the computers in that OU, the following operations happen: An Active Directory query returns a list of all computers that belong to that OU. For each computer that belongs to the selected OU, a WMI call retrieves the list of signed in users. A remote scheduled task is created to run GPUUpdate.exe /force for each signed in user and once for the computer Group Policy refresh. The task is scheduled to run with a random delay of up to 10 minutes to decrease the load on the network traffic. This random delay cannot be configured when you use the GPMC, but you can configure the random delay for the scheduled task or set the scheduled task to run immediately when you use the Invoke-GPUUpdate cmdlet. Reference: Force a Remote Group Policy Refresh (GPUUpdate) QUESTION 278 Your network contains two servers named WSUS1 and WSUS\_REPL that run Windows Server 2012 R2. WSUS1 and WSUS\_REPL have the Windows Server Update Services server role installed. All client computers run Windows 7. WSUS1 synchronizes from Microsoft Update. WSUS\_REPL is a Windows Server Update Services (WSUS) replica of WSUS1. You need to configure replica downstream servers to send WSUS\_REPL summary information about the computer update status. What should you do? A. From WSUS1, configure Reporting Rollup. B. From WSUS\_REPL, configure Reporting Rollup. C. From WSUS1, configure Email Notifications. D. From WSUS\_REPL, configure Email Notifications. Answer: A QUESTION 279 Your network contains an Active Directory domain named contoso.com. All domain controllers run Windows Server 2012 R2. You create a central store for Group Policy. You receive a custom administrative template named Template1.admx. You need to ensure that the settings in Template1.admx appear in all new Group Policy objects (GPOs). What should you do? A. Copy Template1.admx to \Contoso.comSYSVOLContoso.comPoliciesPolicyDefinitions B. From the Default Domain Controllers Policy, add Template1.admx to the Administrative Templates. C. Copy Template1.admx to \Contoso.comNETLOGON D. From the Default Domain Policy, add Template1.admx to the Administrative Templates. Answer: A QUESTION 280 Your network contains an Active Directory forest. The forest contains two domains named contoso.com and fabrikam.com. All of the DNS servers in both of the domains run Windows Server 2012 R2. The network contains two servers named Server1 and Server2. Server1 hosts an Active Directory-integrated zone for contoso.com. Server2 hosts an Active Directory-integrated zone for fabrikam.com. Server1 and Server2 connect to each other by using a WAN link. Client computers that connect to Server1 for name resolution cannot resolve names in fabrikam.com. You need to configure Server1 to resolve names in fabrikam.com. The solution must NOT require that changes be made to the fabrikam.com zone on Server2. What should you create? A. a secondary zone B. a stub zone C. a trust anchor D. a zone delegation Answer: B Passing Microsoft 70-411 Exam successfully in a short time! Just using Braindump2go's Latest Microsoft 70-411 Dump: <http://www.braindump2go.com/70-411.html>