

[New-70-767-Dumps70-767 PDF Questions and Answers 247Q Instant Download in Braindump2go[21-30

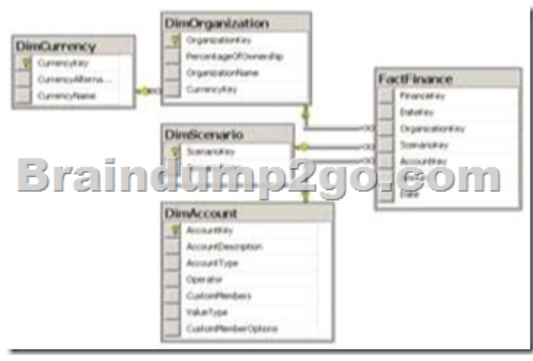
2017 Aug New Microsoft 70-767 Exam Dumps with PDF and VCE Free Updated in www.Braindump2go.com Today!100% 70-767 Real Exam Questions! 100% 70-767 Exam Pass Guaranteed! 1.|2017 New 70-767 Exam Dumps(PDF & VCE) 247Q&As Download:<https://www.braindump2go.com/70-767.html> 2.|2017 New 70-767 Exam Questions & Answers Download: <https://drive.google.com/drive/folders/0B75b5xYLjSSNN1RSdIN6Z0VvRjg?usp=sharing> QUESTION 21 Drag and Drop Question You are building a SQL Server Integration Services (SSIS) package to load data from all files that are automatically copied to a directory each night through an external FTP process. You need to load data from all copied files to a destination table in SQL Server. Which three steps should you perform in sequence? (To answer, move the appropriate actions from the list of actions to the answer area and arrange them in the correct order.)

Answer:

Explanation: <http://msdn.microsoft.com/en-us/library/ms141724.aspx> <http://msdn.microsoft.com/en-us/library/ms137728.aspx> QUESTION 22 You are developing a SQL Server Integration Services (SSIS) package that imports data from a relational database to a data warehouse. You are importing data from a relational table named Projects. The table has change data capture enabled on all columns. You need to process only the most recent values from rows that have been inserted or updated since the previous execution of the package. Which query should you use as the data source?

A. `SELECT * FROM cdc.fn_cdc_get_all_changes_Projects (@from_lsn, @to_lsn, N'all')`
 B. `SELECT * FROM cdc.fn_cdc_get_changes_Projects (@from_lsn, @to_lsn, N'all update old')`
 C. `SELECT * FROM cdc.fn_cdc_get_net_changes_Projects (@from_lsn, @to_lsn, N'all')`
 D. `SELECT * FROM cdc.fn_cdc_get_net_changes_Projects (@from_lsn, @to_lsn)`

A. Option AB. Option BC. Option CD. Option D Answer: D Explanation: <http://msdn.microsoft.com/en-us/library/bb522511.aspx> <http://msdn.microsoft.com/en-us/library/bb510627.aspx> <http://msdn.microsoft.com/en-us/library/cc645937.aspx> QUESTION 23 You are developing a SQL Server Integration Services (SSIS) package to load data into a data warehouse. You need to establish the correct order for loading each table to maximize parallel processing. Which order should you use?

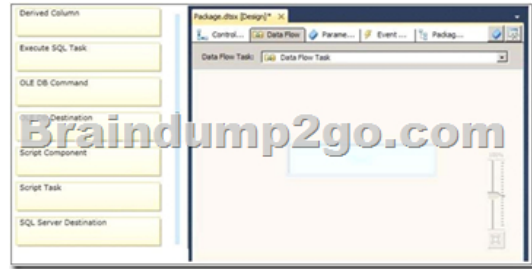


A. 1. DimCurrency, DimScenario, DimAccount in parallel 2. DimOrganization 3. FactFinance B. 1. DimCurrency, DimOrganization in parallel 2. DimScenario, DimAccount in parallel 3. FactFinance C. 1. DimCurrency, FactFinance in parallel 2. DimOrganization, DimScenario, DimAccount in parallel D. 1. FactFinance 2. DimOrganization, DimScenario, DimAccount in parallel

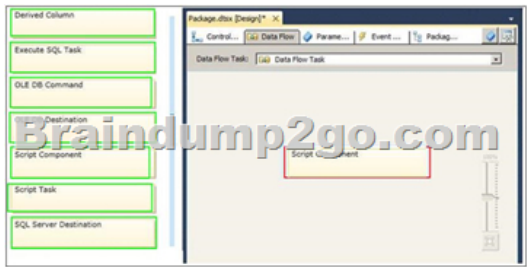
parallel3. DimCurrencyE. 1. DimCurrency2. DimOrganization3. DimScenario, DimAccount in parallel4. FactFinance Answer: A
Explanation:<http://msdn.microsoft.com/en-us/library/ms139892.aspx><http://msdn.microsoft.com/en-us/library/ms141261.aspx>
QUESTION 24You are designing a SQL Server Integration Services (SSIS) package that uploads a file to a table named Orders in a SQL Azure database. The company's auditing policies have the following requirements:- An entry must be written to a dedicated SQL Server log table named OrderLog. - The entry must be written as soon as the file upload task completes. You need to meet the company's policy requirements. Which event handler should you use? A. OnPostExecuteB. OnWarningC. OnExecStatusChangedD. OnVariableValueChanged Answer: AExplanation:

<http://msdn.microsoft.com/en-us/library/ms140223.aspx> QUESTION 25You are editing a SQL Server Integration Services (SSIS) package that contains three Execute SQL tasks and no other tasks. The package and all three Execute SQL tasks have their TransactionOption property set to Supported. You need to ensure that if any of the Execute SQL tasks fail, all three tasks will roll back their changes. What should you do? A. Move the three Execute SQL tasks into a Sequence container.B. Move the three Execute SQL tasks into a Foreach Loop container.C. Change the TransactionOption property of all three Execute SQL tasks to Required.D. Change the TransactionOption property of the package to Required. Answer: DExplanation:

<http://msdn.microsoft.com/en-us/library/ms137749.aspx>
<http://msdn.microsoft.com/en-us/library/microsoft.sqlserver.dts.runtime.dts.transactionoption.aspx> QUESTION 26Drag and Drop QuestionYou are developing a SQL Server Integration Services (SSIS) package. The package uses custom functionality that accesses a SQL Server database. The custom functionality must be implemented by using Language Integrated Query (LINQ). You need to ensure that the LINQ code can be debugged at design time. What should you select from the SSIS Toolbox? (To answer, drag the appropriate item to the correct location in the answer area.)



Answer:



QUESTION 27Drag and Drop QuestionsYou are designing an extract, transform, load (ETL) process with SQL Server Integration Services (SSIS). Two packages, Package A and Package B, will be designed. Package A will execute Package B. Both packages must reference a file path corresponding to an input folder where files will be located for further processing. You need to design a solution so that the file path can be easily configured with the least administrative and development effort. Which four actions should you perform in sequence? (To answer, move the appropriate actions from the list of actions to the answer area and arrange them in the correct order.)



Answer:



QUESTION 28 You are creating a SQL Server Integration Services (SSIS) package that implements a Type 3 Slowly Changing Dimension (SCD). You need to add a task or component to the package that allows you to implement the SCD logic. What should you use?
 A. a Script component
 B. an SCD component
 C. an Aggregate component
 D. a Merge component
Answer: D
Explanation: Note: Type of Slowly Changing Dimensions Slowly Changing Dimensions are categorized into three types named: Type 1, Type 2, and Type 3. The Type 1 SCD does not maintain the history of changing attributes, it overwrites values of the attributes. Type 2 maintains historical values for changing attributes. Type 3 that we do not use much maintains separate columns for changed attributes. SSIS SCD wizard supports both Type 1 and Type 2. Using MERGE instead of SCD wizard Replacement of SCD wizard with MERGE is not a straightforward technique. If the SCD has both Type 1 and Type 2 types attributes, they need to be handled separately.

QUESTION 29 You are developing a SQL Server Integration Services (SSIS) package that imports data into a data warehouse. You add an Execute SQL task to the control flow. The task must execute a simple INSERT statement. The task has the following requirements:- The INSERT statement must use the value of a string package variable. - The variable name is StringVar. - The Execute SQL task must use an OLE DB Connection Manager. In the Parameter Mapping tab of the Execute SQL task, StringVar has been added as the only parameter. You must configure the SQLStatement property of the Execute SQL task. Which SQL statement should you use?
 A. INSERT INTO dbo.Table (variablevalue) VALUES (\$StringVar)
 B. INSERT INTO dbo.Table (variablevalue) VALUES (0)
 C. INSERT INTO dbo.Table (variablevalue) VALUES (@0)
 D. INSERT INTO dbo.Table (variablevalue) VALUES (?)
Answer: D
Explanation: <http://msdn.microsoft.com/en-us/library/ms141003.aspx>
<http://msdn.microsoft.com/en-us/library/ms140355.aspx>
<http://msdn.microsoft.com/en-us/library/cc280502.aspx>

QUESTION 30 Drag and Drop Question You develop a SQL Server Integration Services (SSIS) project by using the Project Deployment model. The project contains many packages. It is deployed on a server named Development1. The project will be deployed to several servers that run SQL Server 2012. The project accepts one required parameter. The data type of the parameter is a string. A SQL Agent job is created that will call the master.dtsx package in the project. A job step is created for the SSIS package. The job must pass the value of an SSIS Environment Variable to the project parameter. The value of the Environment Variable must be configured differently on each server that runs SQL Server. The value of the Environment Variable must provide the server name to the project parameter. You need to configure SSIS on the Development1 server to pass the Environment Variable to the package. Which four actions should you perform in sequence by using SQL Server Management Studio? (To answer, move the appropriate actions from the list of actions to the answer area and arrange them in the correct order.)



Answer:



!!!RECOMMEND!!! | 2017 New 70-767 Exam Dumps (PDF & VCE) 247Q&As Download:
<https://www.braindump2go.com/70-767.html> | 2017 New 70-767 Study Guide Video: YouTube Video:

[YouTube.com/watch?v=YL58kAz1KoA](https://www.youtube.com/watch?v=YL58kAz1KoA)