

Get Free PDF Microsoft 70-411 Braindumps From Braindump2go - Guarantee 100% Pass 70-411 Exam(51-60)

QUESTION 51 Your network contains two Active Directory forests named contoso.com and adatum.com. All domain controllers run Windows Server 2012 R2. The adatum.com domain contains a Group Policy object (GPO) named GPO1. An administrator from adatum.com backs up GPO1 to a USB flash drive. You have a domain controller named dcl.contoso.com. You insert the USB flash drive in dcl.contoso.com. You need to identify the domain-specific reference in GPO1. What should you do? A. From Group Policy Management, run the Group Policy Results Wizard. B. From the Migration Table Editor, click Populate from GPO.C. From Group Policy Management, run the Group Policy Modeling Wizard. D. From the Migration Table Editor, click Populate from Backup. Answer: D Explanation: <http://technet.microsoft.com/en-us/library/cc779961%28v=ws.10%29.aspx>

QUESTION 52 Your network contains an Active Directory domain named contoso.com. All client computers run Windows Vista Service Pack 2 (SP2). All client computers are in an organizational unit (OU) named OU1. All user accounts are in an OU named OU2. All users log on to their client computer by using standard user accounts. A Group Policy object (GPO) named GPO1 is linked to OU1. A GPO named GPO2 is linked to OU2. You need to apply advanced audit policy settings to all of the client computers. What should you do? A. In GPO1, configure a startup script that runs auditpol.exe. B. In GPO2, configure a logon script that runs auditpol.exe. C. In GPO1, configure the Advanced Audit Policy Configuration settings. D. In GPO2, configure the Advanced Audit Policy Configuration settings. Answer: A

QUESTION 53 Your network contains an Active Directory domain named contoso.com. Domain controllers run either Windows Server 2008, Windows Server 2008 R2, or Windows Server 2012 R2. You have a Password Settings object (PSOs) named PSO1. You need to view the settings of PSO1. Which tool should you use? A. Group Policy Management B. Get-ADFineGrainedPasswordPolicy C. Get-ADDefaultDomainPasswordPolicy D. Server Manager Answer: B

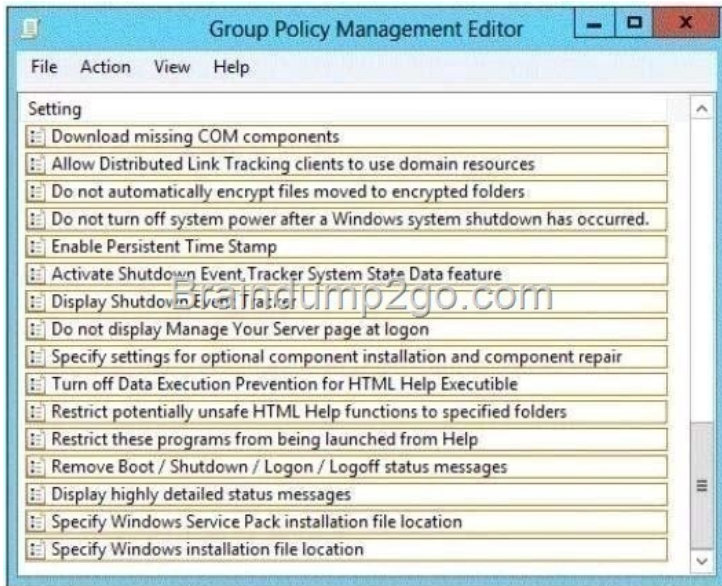
Explanation: The Get-ADFineGrainedPasswordPolicy cmdlet gets a fine grained password policy or performs a search to retrieve multiple fine grained password policies. Note: * In Windows Server 2008 (and later), you can use fine-grained password policies to specify multiple password policies and apply different password restrictions and account lockout policies to different sets of users within a single domain. For example, to increase the security of privileged accounts, you can apply stricter settings to the privileged accounts and then apply less strict settings to the accounts of other users. Or in some cases, you may want to apply a special password policy for accounts whose passwords are synchronized with other data sources. Reference: Get-ADFineGrainedPasswordPolicy

QUESTION 54 Your network contains an Active Directory domain named contoso.com. All domain controllers run Windows Server 2012 R2. An organizational unit (OU) named OU1 contains 200 client computers that run Windows 8 Enterprise. A Group Policy object (GPO) named GPO1 is linked to OU1. You make a change to GPO1. You need to force all of the computers in OU1 to refresh their Group Policy settings immediately. The solution must minimize administrative effort. Which tool should you use? A. Group Policy Object Editor B. The Secedit command C. Group Policy Management Console (GPMC) D. Active Directory Users and Computers Answer: C

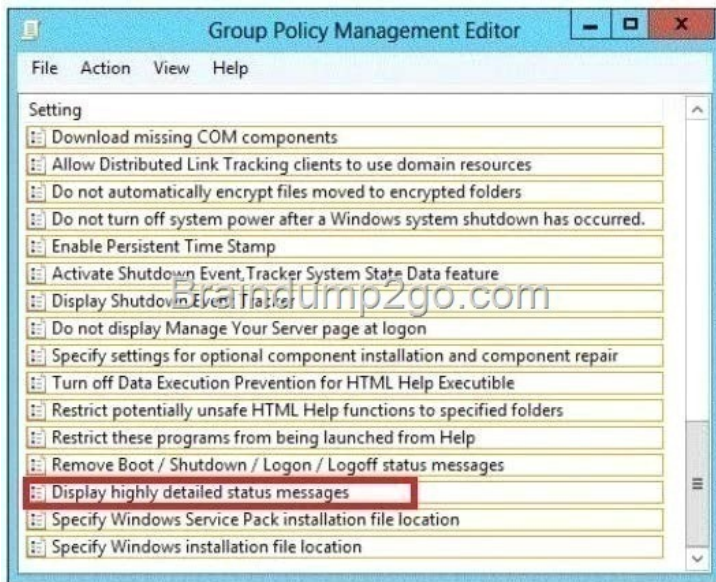
In the previous versions of Windows, this was accomplished by having the user run GPUpdate.exe on their computer. Starting with Windows Server 2012 and Windows 8, you can now remotely refresh Group Policy settings for all computers in an OU from one central location through the Group Policy Management Console (GPMC). Or you can use the Invoke-GPUpdate cmdlet to refresh Group Policy for a set of computers, not limited to the OU structure, for example, if the computers are located in the default computers container. Note: Group Policy Management Console (GPMC) is a scriptable Microsoft Management Console (MMC) snap-in, providing a single administrative tool for managing Group Policy across the enterprise. GPMC is the standard tool for managing Group Policy. Incorrect: Not B: Secedit configures and analyzes system security by comparing your current configuration to at least one template. Reference: Force a Remote Group Policy Refresh (GPUpdate)

QUESTION 55 Force an authoritative and non-authoritative synchronization for DFSR-replicated SYSVOL. A. dfsgui.msc B. ultrasound C. replmon D. frsutil Answer: D

Explanation: <http://www.polymerit.co.uk/blog/2012/05/troubleshooting-sysvol-and-file-replication-service-issues/> **QUESTION 56** Hotspot Question Your network contains an Active Directory domain named contoso.com. The domain contains a domain controller named DC1 that runs Windows Server 2012 R2. The domain contains some test client computers that run either Windows XP, Windows Vista, Windows 7, or Windows 8. The computer accounts for the test computers are located in an organizational unit (OU) named OU1. You have a Group Policy object (GPO) named GP01 linked to OU1. GP01 is used to assign several applications to the test computers. You need to ensure that when the test computers in OU1 restart, you can see which application installation is running currently. Which setting should you modify in GP01? To answer, select the appropriate setting in the answer area.



Answer:



QUESTION 57 I am using a Domain Admins account to run the console and the service is running under local system. I try approve Requests from Pending devices, then I got notice Access Denied, (Windows Server 2003 R2). And why Architecture x64, clients are x86? Is that the reason and how to fix it? A. Open WDS and right click on the server and select properties. Then click on the tab "PXE Response settings" and select respond to all (known and unknown) client. And also select the little checkbox below. B. You need to grant permissions on the OU in which you want to create machine accounts for the WDS Server Machine Account. C. To grant permissions to approve a pending computer Open Active Directory Users and Computers. Right-click the OU where you are creating prestaged computer accounts, and then select Delegate Control. On the first screen of the wizard, click Next. Change the object type to include computers. Add the computer object of the Windows Deployment Services server, and then click Next. Select Create a Custom task to delegate. Select Only the following objects in the folder. Then select the Computer Objects check box, select Create selected objects in this folder, and click Next. In the Permissions box, select the Write all Properties check box, and click Finish. D. Define the OU path to add systems in WDS Delegate Computer object create or grant rights to the WDS server for the OU Delegate computer object create rights to your account or simply use a domain admin account to logon

Answer: C

Explanation: [http://technet.microsoft.com/en-us/library/cc766320\(v=WS.10\).aspx#BKMK_CreatingDiscover](http://technet.microsoft.com/en-us/library/cc766320(v=WS.10).aspx#BKMK_CreatingDiscover)

QUESTION 58 force an authoritative and non-authoritative synchronization for DFSR-replicated SYSVOL

A. ldpB. dfsogui.mscC. ultrasoundD. rplmon

Answer: A

Explanation: <http://support.microsoft.com/kb/2218556>

QUESTION 59 how to give the minimum required permission to a user who wants to promote a RODC.

A. member of the Domain Admins groupB. allowed to attach the server to

the RODC computer accountC. Local adminD. organization admin Answer: BExplanation:

<http://technet.microsoft.com/en-us/library/jj574152.aspx>The Delegation of RODC Installation and Administration dialog enables you to configure a user or group containing users who are allowed to attach the server to the RODC computer account. The user or group specified in this dialog gains local administrative permissions to the RODC. The specified user or members of the specified group can perform operations on the RODC with privileges equivalent to the computer's Administrators group. They are not members of the Domain Admins or domain built-in Administrators groups. [http://technet.microsoft.com/es-es/library/cc770627\(v=ws.10\).aspx](http://technet.microsoft.com/es-es/library/cc770627(v=ws.10).aspx)

QUESTION 60Your network contains an Active Directory domain named contoso.com. All domain controllers run Windows Server 2012 R2. A domain controller named DC1 has the ADMX Migrator tool installed. You have a custom Administrative Template file on DC1 named Template1.adm. You need to add a custom registry entry to Template1.adm by using the ADMX Migrator tool.

Which action should you run first? A. New CategoryB. Load TemplateC. New Policy SettingD. Generate ADMX from ADM Answer: DExplanation:A. Done after ADMX is created, adds categories of policy settings B. Done after ADMX is created, Loads ADMX template to be edited C. Done after ADMX is created, defines new registry-based policy settings D. Converts ADM files into ADMX (XML Format) <http://technet.microsoft.com/en-us/magazine/2008.02.utilityspotlight.aspx> Download

Braindump2go's Latest Microsoft 70-411 Dump Full Version For Free: <http://www.braindump2go.com/70-411.html>