

Braindump2go Shares the Latest Free Official Microsoft 70-532 Exam Training Questions and Answers (41-50)

2015 Microsoft 70-532 Certification Exam is coming! Getting a Latest 70-532 Practice Test is very important for an Exam Candidate! Braindump2go New Updated 70-532 Exam Questions Well Formatted in PDF and VCE versions, providing you convenience and excellence both at the same time! Free Questions and Answer are provided Following: Vendor: Microsoft Exam Code: 70-532 Exam Name: Developing Microsoft Azure Applications Keywords: 70-532 Dumps, 70-532 Practice Tests, 70-532 Practice Exams, 70-532 Exam Questions, 70-532 PDF, 70-532 VCE, 70-532 Braindump

Compared Before Buying Microsoft 70-532 PDF & VCE!

Pass4sure	Braindump2go	TestKing
	100% Pass OR Money Back	
Not In Stock	105 Q&As – Real Questions	50 Q&As – Practice
/	\$99.99	\$124.99
/	Coupon Code: BDNT2014	No Discount

QUESTION 41 You are planning to move streaming media content to Windows Azure Storage. You need to recommend an approach for providing worldwide users the fastest possible access to the content. Which two actions should you recommend? (Each correct answer presents part of the solution. Choose two.)
A. Use a Shared Access Signature.
B. Use Windows Azure page blob storage.
C. Use Windows Azure block blob storage.
D. Use the Windows Azure Content Delivery Network (CDN).
Answer: CD
Explanation: You can store text and binary data in either of two types of blobs: Block blobs, which are optimized for streaming. Page blobs, which are optimized for random read/write operations and which provide the ability to write to a range of bytes in a blob. Windows Azure provides the Windows Azure Content Delivery Network (CDN) to deliver Windows Azure Blob content. Windows Azure CDN offers developers a global solution for delivering high-bandwidth content. The benefit of using a CDN is better performance and user experience for users who are farther from the source of the content stored in the Windows Azure blob storage.

QUESTION 42 You are designing a plan for migrating Virtual Hard Disks (VHDs) and video files to Windows Azure Storage. The VHDs must be optimized for random read/write operation. The video files must be optimized for sequential access. You need to recommend storage types for storing the VHDs and video files. Which two storage types should you recommend? (Each correct answer presents part of the solution. Choose two.)
A. Store VHDs in Windows Azure page blob storage.
B. Store VHDs in Windows Azure block blob storage.
C. Store video files in Windows Azure page blob storage.
D. Store video files in Windows Azure block blob storage.
Answer: AD
Explanation: You can store text and binary data in either of two types of blobs: Block blobs, which are optimized for streaming. Page blobs, which are optimized for random read/write operations and which provide the ability to write to a range of bytes in a blob. After you create or change the server image, you are ready to upload the .vhd file that contains the image data to Windows Azure. There are two opportunities for uploading VHDs to Windows Azure. When you initially create a VM role, you upload a base VHD to Windows Azure, which is used as a template to create VM role instances.

QUESTION 43 You are designing a Windows Azure application that will use Windows Azure Table storage. The application will allow teams of users to collaborate on projects. Each user is a member of only one team. You have the following requirements:- Ensure that each user can efficiently query records related to his or her team's projects.- Minimize data access latency. You need to recommend an approach for partitioning table storage entities. What should you recommend?
A. Partition by user.
B. Partition by team.
C. Partition by project.
D. Partition by the current date.
Answer: B

QUESTION 44 You deploy a stateless ASP.NET application to an Azure website. You scale out the application by adding website instances. Only newly signed in users are routed to the recently added website instances. Users must be evenly distributed among all of the instances. You need to configure the environment to ensure that the load balancer evenly distributes requests. What should you do?

☐ A. Add the following markup to the web.config file for the application:

```
<system.webServer>
  <httpProtocol>
    <customHeaders>
      <add name="Arr-Disable-Session-Affinity" value="False" />
    </customHeaders>
  </httpProtocol>
</system.webServer>
```

☐ B. Configure autoscaling rules based on metrics.

☐ C. Add the following markup to the web.config file for the application:

```
<system.webServer>
  <httpProtocol>
    <customHeaders>
      <add name="Arr-Disable-Session-Affinity" value="True" />
    </customHeaders>
  </httpProtocol>
</system.webServer>
```

☐ D. Enable Always On support.

A. Option AB. Option BC. Option CD. Option D Answer: C QUESTION 45You store data in an Azure blob. Data accumulates at a rate of 0.10 GB per day.You must use storage analytics data to verify that the service level agreement (SLA) has been met and to analyze the performance of VHDs, including the pattern of usage.Analytics data must be deleted when it is older than 100 days or when the total amount of data exceeds 10 GB.You need to configure storage analytics and access the storage analytics data.Which two approaches will achieve the goal? Each correct answer presents part of the solution. A. Disable the data retention policy.B. Access analytics data by using the Service Management REST APLC. Access analytics data by using the APIs used to read blob and table data.D. Configure a data retention policy of 100 days. Answer: CD QUESTION 46Hotspot QuestionYou store JSON data in a blob by using the Azure Blob service. Web applications access the JSON data by using client-side JavaScript calls.JSON data is stored in a container that is configured to allow anonymous access. Web applications that are allowed to make updates to the data have access to any necessary shared access signatures (SASs) and storage keys.You configure one Cross-Origin Resource Sharing (CORS) rule for the <https://fabrikam.com> domain and then run the following method. Line numbers are provided for reference only.

```
01 void ConfigureBlobCorsRules(CloudBlobClient blobClient)
02 {
03     var blobServiceProperties = blobClient.GetServiceProperties();
04     var partnerCorsRule = new CorsRule();
05     partnerCorsRule.AllowedOrigins.Add("https://contoso.com");
06     partnerCorsRule.AllowedMethods = CorsHttpMethods.Post | CorsHttpMethods.Put;
07     partnerCorsRule.ExposedHeaders.Add("*");
08     partnerCorsRule.AllowedHeaders.Add("*");
09     publicCorsRule = new CorsRule();
10     publicCorsRule.AllowedOrigins.Add("https://fabrikam.com");
11     publicCorsRule.AllowedMethods = CorsHttpMethods.Get;
12     publicCorsRule.ExposedHeaders.Add("*");
13     publicCorsRule.AllowedHeaders.Add("*");
14     blobServiceProperties.Cors.CorsRules.Add(publicCorsRule);
15     blobClient.SetServiceProperties(blobServiceProperties);
16 }
17 }
```

For each of the following statements, select Yes if the statement is true. Otherwise, select No.

Answer Area

The CORS rule that was previously configured for <https://fabrikam.com> is no longer in effect after this method runs.

Partners from the <https://contoso.com> domain can access the configured storage service by using the HTTP HEAD operation.

Partners from the <https://contoso.com> domain can access the configured storage service by using the HTTP GET operation.

Answer:

Answer Area

	Yes	No
The CORS rule that was previously configured for https://fabrikam.com is no longer in effect after this method runs.	<input checked="" type="radio"/>	<input type="radio"/>
Partners from the https://contoso.com domain can access the configured storage service by using the HTTP HEAD operation.	<input type="radio"/>	<input checked="" type="radio"/>
Partners from the https://contoso.com domain can access the configured storage service by using the HTTP GET operation.	<input type="radio"/>	<input checked="" type="radio"/>

QUESTION 47You develop a web application that will use the Azure Table service.The web application will store entities in the form of XML data within a single table.The web application must support high traffic throughput.You need to avoid exceeding the throttle limit for the table.Which two actions should you take? Each correct answer presents part of the solution. A. Add additional partition keys to the table.B. Batch transactions for entities that are in the same partition group in the table.C. Compress the entities before storing them in the table.D. Store the entities in JSON format. Answer: BD QUESTION 48You are managing an application. The application uses data that is stored in an Azure SQL database.You must be able to reset the application to the state that existed on any day in the previous 35 days.You need to choose a backup solution.What should you do? A. Run SQL replication on the SQL database once a day.B. Use Microsoft Azure SQL Database Point in Time RestoreC. Use the SQL Server Data-Tier Application Framework to build a data-tier application (DAC) file once a day.D. Use the bcp utility to export data to an Azure page blob once a day. Answer: B QUESTION 49Hotspot QuestionTailspin Toys uses a website to manage its inventory. The website is hosted on Azure. You are writing a Windows Store app that uses data from the blob storage.You need to retrieve an image from the following URI:<https://tailspintoys.blob.core.windows.net/Trains/Caboose2.jpg>.How should you complete the relevant code? To answer, select the appropriate code segments in the answer area.

Answer Area

```
CloudStorageAccount storageAccount = CloudStorageAccount.Parse(
    CloudConfigurationManager.GetSetting("StorageConnectionString"));
CloudBlobClient blobClient = storageAccount. ( )
    BlobEndpoint
    FileEndpoint
    CreateBlobClient
    CreateBlobFromUri
    CreateBlobFromText

CloudBlobContainer blobContainer =
    Client ("trains");

CloudBlockBlob myBlob =
    blobContainer. ("Caboose2.jpg");
    GetBlockBlobReference
    GetDirectoryReference

using (var fileStream = System.IO.File.OpenWrite
    (@path\myfile))
{
    myBlob.DownloadToStream(fileStream);
}
```

Answer: Answer Area

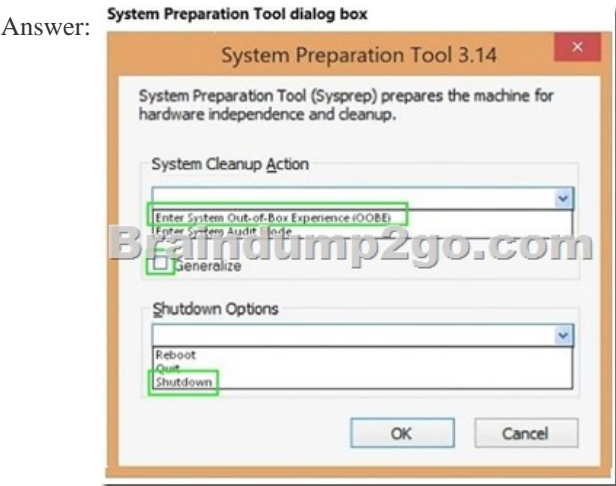
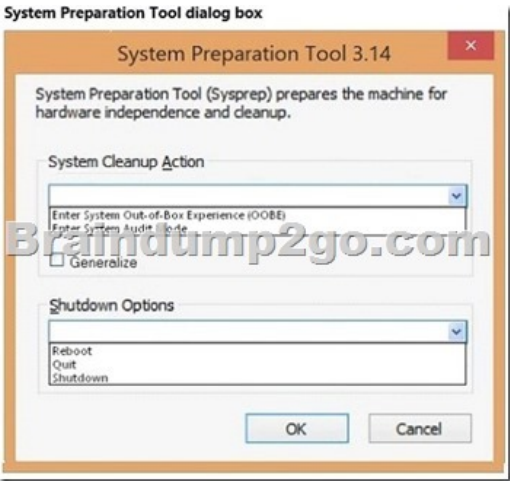
```
CloudStorageAccount storageAccount = CloudStorageAccount.Parse(
    CloudConfigurationManager.GetSetting("StorageConnectionString"));
CloudBlobClient blobClient = storageAccount. ( )
    BlobEndpoint
    FileEndpoint
    CreateBlobClient
    CreateBlobFromUri
    CreateBlobFromText

CloudBlobContainer blobContainer =
    Client ("trains");

CloudBlockBlob myBlob =
    blobContainer. ("Caboose2.jpg");
    GetBlockBlobReference
    GetDirectoryReference

using (var fileStream = System.IO.File.OpenWrite
    (@path\myfile))
{
    myBlob.DownloadToStream(fileStream);
}
```

QUESTION 50Hotspot QuestionYou have an existing server that runs Windows Server.You plan to create a base image of this server. You will use this base image to prepare several virtual servers for future use. After the base image is prepared, you will capture it by using the Azure management portal.You must use the System Preparation Tool (Sysprep) to prepare the server so that the base image can be captured.You need to prepare the server so that the base image can be captured.What should you do? To answer, configure the appropriate options in the dialog box in the answer area.



Braindump2go 70-532 Latest Updaed Braindumps Including All New Added 70-532 Exam Questions from Exam Center which Guarantees You Can 100% Success 70-532 Exam in Your First Try Exam!

Compared Before Buying Microsoft 70-532 PDF & VCE

Pass4sure	Braindump2go	TestK
	100% Pass OR Money Back	
Not In Stock	105 Q&As – Real Questions	50 Q&As – Prac
/	\$99.99	\$124.99
/	Coupon Code: BDNT2014	No Discount

<http://www.braindump2go.com/70-532.html>