

[Braindump2go Free 70-662 Dumps Questions Download (241-250)]

MICROSOFT NEWS: 70-662 Exam Questions has been Updated Today! Get Latest 70-662 VCE and 70-662 PDF Instantly! Welcome to Download the Newest Braindump2go 70-662 VCE&70-662 PDF Dumps:

<http://www.braindump2go.com/70-662.html> (507 Q&As) 70-662 Exam Dumps Free Shared By Braindump2go For Instant Download Now! Download Latest 70-662 Exam Questions and pass 70-662 one time easily! Do you want to be a winner? Exam Code: 70-662 Exam Name TS: Microsoft Exchange Server 2010, Configuring Certification Provider: Microsoft Corresponding Certifications: MCITP, MCITP: Enterprise Messaging Administrator on Exchange 2010, MCTS, MCTS: Microsoft Exchange Server 2010, Configuring 70-662 Dumps, 70-662 PDF, 70-662 PDF eBook, 70-662 Braindump, 70-662 Study Guide, 70-662 Book, 70-662 Practice Test, 70-662 Dumps PDF, 70-662 VCE, 70-662 VCE Dumps, 70-662 Valid Dumps, 70-662 Exam Questions Free, 70-662 Dumps, 70-662 Free Dumps, 70-662 Questions and Answers Free, 70-662 Braindump PDF, 70-662 Braindump VCE, 70-662 Preparation

TS: Microsoft Exchange Server 2010, Configuring: 70-662



Questions and Answers : 507 Q&As
Updated: Jan 02, 2016
\$129.99 **\$99.99**
[PDF DEMO](#)
[CHECK OUT](#)

Product Description Exam Number/Code: 70-662

Exam Number/Code: 70-662

"TS: Microsoft Exchange Server 2010, Configuring", also known as 70-662 exam, is a Microsoft Certification. With the complete collection of questions and answers, Braindump2go has assembled to take you through 507 Q&As to your 70-662 Exam preparation. In the 70-662 exam resources, you will cover every field and category in Microsoft MCITP helping to ready you for your successful Microsoft Certification.

Free Demo Download

Braindump2go offers free demo for 70-662 exam (TS: Microsoft Exchange Server 2010, Configuring). You can check out the interface, question quality and usability of our practice exams before you decide to buy it.

☒ **Printable PDF** ☒ **Premium VCE + VCE Simulator**

QUESTION 241 Your network contains an Active Directory forest that contains one domain. You plan to delegate the installation of an Exchange Server 2010 server to an external consultant named User1. User1 is a member of the Server Operators group and the Account Operators group only. You need to ensure that User1 can install the Exchange Server 2010 server in the forest. What should you run from the Exchange Server 2010 installation media? A. Setup /PrepareADB. Setup /PrepareDomainC. Setup /PrepareLegacyPermissionsD. Setup /PrepareSchema Answer: A Explanation: PrepareAD will run preparelegacyexchangepermissions and prepareschema if it detects they have not been run.

<http://technet.microsoft.com/en-us/library/bb125224.aspx> QUESTION 242 You have an Exchange organization. All servers in the organization have Exchange Server 2010 Service Pack 1 (SP1) installed. All servers run Windows Server 2008 R2. The organization contains Mailbox servers, Client Access servers, and Hub Transport servers only. You need to identify why a server on the Internet rejects email messages sent from users in the organization. What should you do? A. Review the connectivity logsB. Run the Exchange Server User Monitor (ExMon)C. Run the Get-MailboxFolderStatistics cmdletD. Modify the Log Settings from the properties of the Hub Transport serverE. Review the Application event logF. Run the Set-AdminAuditLogConfig cmdletG. Run the Set-EventLogLevel cmdletH. Run the Get-User cmdletI. Modify the Server Diagnostic Logging PropertiesJ. Run the Exchange Best Practices AnalyzerK. Enable SMTP protocol loggingL. Run the Get-MailboxStatistics cmdlet Answer: K Explanation: <http://technet.microsoft.com/en-us/library/bb124531.aspx> QUESTION 243 You have an Exchange organization. All servers in the organization have Exchange Server 2010 Service Pack 1 (SP1) installed. You need to ensure that an administrator can recover hard-deleted e-mail messages from a user's mailbox until the deleted item retention period has elapsed. All expired e-mail messages must be deleted when the retention period has elapsed. What should you do? A. Create a retention policy and a retention tag.B. Create a managed custom folder and managed content settings.C. From the properties of the mailbox, enable litigation hold.D. From the properties of the mailbox, enable retention hold.E. From the properties of the mailbox, enable single item recovery.F. From the properties of a Mailbox server, modify the System Settings.G. From the Exchange Management Shell, run the Export-Mailbox cmdlet.H. From the Exchange Management Shell, run the New-MailboxSearch cmdlet.I. From the Exchange Management Shell, run the New-MailboxExportRequest cmdletJ. From the Exchange Management Shell, run Set-MailboxDatabase-DumpsterStatistics \$true. K. From the properties of the mailbox database, modify the Deletion Settings.

From the properties of the mailbox database, modify the maintenance schedule.L. From the properties of the mailbox database, select the This database can be overwritten by a restore check box. Answer: EExplanation:Reference:

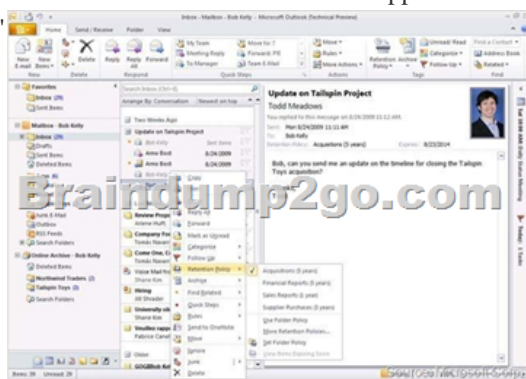
<http://technet.microsoft.com/en-us/library/ee364755.aspx><http://technet.microsoft.com/en-us/library/ee633460.aspx>
<http://technet.microsoft.com/en-us/library/ff660637.aspx>

QUESTION 244You have an Exchange organization. All servers in the organization have Exchange Server 2010 Service Pack 1 (SP1) installed. The organization contains a database availability group (DAG) named DAG1. DAG1 contains three Mailbox servers including a server named Server1. Server1 fails. You restore Server1. You need to ensure that Server1 can replicate mailbox databases from DAG1. What should you do first? A. Modify the GUID for Server1.B. Remove the object for Server1 from DAG1.C. Remove the default mailbox database from Server1.D. Disable log truncation for the mailbox databases in DAG1. Answer: BExplanation:Remove-DatabaseAvailabilityGroupServer-Identity DAG1-MailboxServer MBX1-ConfigurationOnlyHigh level steps to recover Server1:1) Remove the failed server's configuration from the DAG by using the Remove-DatabaseAvailabilityGroupServer cmdlet. Because the DAG member being removed was offline and could not be brought online, you must add the ConfigurationOnly parameter to the above command.2) Reset the server's computer account in Active Directory.3) Open a Command Prompt window. Using the original Setup media, run the following command:Setup /m:RecoverServer4) When the Setup recovery process is complete, add the recovered server to the DAG by using the Add-DatabaseAvailabilityGroupServer cmdlet.5) After the server has been added back to the DAG, you can reconfigure mailbox database copies by using the Add-MailboxDatabaseCopy cmdlet.Reference:

<http://technet.microsoft.com/en-us/library/dd638206.aspx> QUESTION 245You have an Exchange organization. All servers in the organization have Exchange Server 2010 Service Pack 1 (SP1) installed. You create a retention policy and apply the policy to all of the mailboxes in the organization. You need to add a default policy tag to a retention policy. The tag must move all e-mail messages automatically to a Personal Archive six months after the messages are received.What should you do first? A. Modify the management role groups.B. Modify the User Role Assignment Policy.C. Create a Retention Policy Tag that uses the Personal Folders tag type.D. Create a Retention Policy Tag that uses the All other folders tag type.E. Run the set-retentionpolicytag -identity never delete-type all command.F. Run the set-mailbox -identity user1-retentionholdenabled \$true command.G. Run the set-retentionpolicytag -identity never delete-type Personal command.H. Run the set-mailbox -identity user1-singleitemrecoveryenabled \$true command.I. Run the get-retentionpolicytag | set-retentionpolicytag -retentionenabled \$false command. Answer: DExplanation:You can't create Retention Policy Tags (RPTs-for default folders such as Inbox and Deleted Items) with the Move to Archive action. The Move To Archive action is only supported for Default Policy Tag (Type = 'All') or Personal Tags. The former apply to entire mailbox. The latter can be used by Outlook 2010/OWA users to tag individual folders or items. And you need to create an archive mailbox for the user. So the correct command as the following. And if you need to new a DPT, please use type "all". New-RetentionPolicyTag "InboxMovetoArchive30days"-Type "All/Personal"-Comment "Inbox move to archive in 30 days"-RetentionEnabled \$true-AgeLimitForRetention 30-RetentionAction MovetoArchive New-RetentionPolicy "ManagedFoldersRetentionPolicy" ?RetentionPolicyTagLinks InboxMovetoArchive30days" Other information for your reference. Personal Folder Retention Tag not working (Exchange 2010 SP1):

<http://social.technet.microsoft.com/Forums/en-AU/exchange2010/thread/8289a667-1504-46d7-ac65-ff0560ec3fa0>Create a Retention Tag:<http://technet.microsoft.com/en-us/library/ff625223.aspx>Exchaneg 2010 SP1 Possible Bug, Cannot create move to archive retention tag on inbox, but can create a new one and edit and assign inbox to it:

<http://social.technet.microsoft.com/Forums/en-US/exchange2010/thread/4b87d412-3350-4b0d-9364-03e6366bd35e/Ref#>
<http://blogs.technet.com/b/ianhamer/archive/2009/12/04/curious-about-exchange-2010-retentionpolicies.aspx>Personal Tags (or Personal Tags)-here's where you can created additional tags that your users can apply to their own customer folders (as well as individual items). They can do this in either Outlook 2010 or Outlook Web App. In our demo environment, we have created such tags, like "Acquisitions, keep for 5 years"



QUESTION 246 You have an Exchange Server 2010 Service Pack 1 (SP1) organization. The organization contains two mailbox-enabled users named User1 and User2. You need to ensure that User1 can send email messages on behalf of User2. Which cmdlet should you use? A. Set-MailUserB. Set-MailboxFolderPermissionsC. New-TransportRuleD. Set-MailboxE. New-MailContactF. New-ManagementScopeG. New-ManagementRoleAssignmentH. Set-GroupI. Set-ManagementRoleAssignmentJ. Add-ADPermission Answer: DExplanation: Set-Mailbox. e.g. -Set-Mailbox user2?GrantSendOnBehalf To user1J: Send-As is incorrect (Add-ADPermission UserMailbox-ExtendedRights Send-As?user UserWhoSends)Send on Behalf and Send AsSend on Behalf and Send As are similar in fashion. Send on Behalf will allow a user to send as another user while showing the recipient that it was sent from a specific user on behalf of another user. What this means, is that the recipient is cognitive of who actually initiated the sending message, regardless of who it was sent on behalf of. This may not be what you are looking to accomplish. In many cases, you may want to send as another person and you do not want the recipient to be cognitive about who initiated the message. Of course, a possible downside to this, is that if the recipient replies, it may go to a user who did not initiate the sent message and might be confused depending on the circumstances. Send As can be useful in a scenario where you are sending as a mail-enabled distribution group. If someone replies, it will go to that distribution group which ultimately gets sent to every user who is a part of that distribution group. This article will explain how to use both methods. Reference: <http://www.shudnow.net/2007/08/12/send-on-behalf-and-send-as/>Reference:

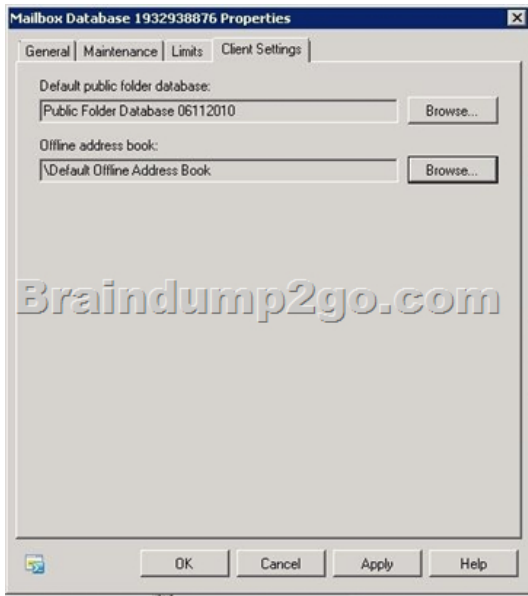
<http://technet.microsoft.com/en-us/library/bb123981.aspx> **QUESTION 247** You have an Exchange Server 2010 Service Pack 1 (SP1) organization. The organization contains two mailbox-enabled users named User1 and User2. You need to ensure that User1 can send email messages as User2. Which cmdlet should you use? A. Add-ADPermissionB. Set-GroupC. Set-MailboxFolderPermissionsD. Set-MailboxE. New-ManagementRoleAssignmentF. New-ManagementScopeG. New-TransportRuleH. New-MailContactI. Set-MailUserJ. Set-ManagementRoleAssignment Answer: AExplanation: Add-ADPermission e.g. Add-ADPermission user2-User "DomainUser1"-Extendedrights "Send As"Reference:

<http://technet.microsoft.com/en-us/library/bb124403.aspx><http://technet.microsoft.com/en-us/library/bb676368.aspx> **QUESTION 248** You have an Exchange Server 2010 Service Pack 1 (SP1) organization. All users have Microsoft Outlook 2010 installed on their client computer. You need to ensure that the users are warned of a new corporate communication policy before they send email messages to users in the legal department. Which cmdlet should you use? A. Set-MailUserB. New-ManagementScopeC. New-ManagementRoleAssignmentD. Set-ManagementRoleAssignmentE. New-MailContactF. New-TransportRuleG. Set-MailboxH. Set-MailboxFolderPermissionsI. Add-ADPermissionJ. Set-Group Answer: GExplanation: This is a MailTip. e.g. Set-Mailbox -Identity legal1-MailTip "new corporate communication policy" Reference:

<http://technet.microsoft.com/en-us/library/dd297974.aspx> **QUESTION 249** Your company has offices in New York and Montreal. Each office is configured as an Active Directory site. You have an Exchange Server 2010 Service Pack 1 (SP1) organization. The organization contains five servers. The servers are configured as shown in the following table. Each Mailbox server contains two mailbox databases. All users have a mailbox on their local Mailbox server. Server3 contains a public folder database. You create a new public folder database on Server4. You need to ensure that all new public folders created by users are created on Server4. What should you modify?


Server name	Server role	Server site
Server1	Client Access Hub Transport	New York
Server2	Client Access Hub Transport	Montreal
Server3	Mailbox	New York
Server4	Mailbox	Montreal
Server5	Edge Transport	New York

A. the mailbox featuresB. an Attachment Filter agentC. the Autodiscover DNS recordD. the email address policy Answer: AExplanation:



QUESTION 250 You have an Exchange Server 2010 Service Pack 1 (SP1) organization. You need to ensure that a user named User1 can manage the properties of all the public folders in the organization. Which cmdlet should you use? A. New-ManagementScopeB. Set-MailboxC. Set-ManagementRoleAssignmentD. New-MailContactE. Set-MailUserF. Set-GroupG. Set-MailboxFolderPermissionsH. New-TransportRuleI. New-ManagementRoleAssignment.J. Add-ADPermission Answer: IExplanation:New-ManagementRoleAssignment-Name "Public Folder Management for User1"-Role "Public Folder Management"-User User1Reference:<http://technet.microsoft.com/en-us/library/dd335193>
<http://technet.microsoft.com/en-us/library/dd876947.aspx> All 507 Microsoft 70-662 Exam Dumps Questions are the New Checked and Updated! In recent years, the 70-662 certification has become a global standard for many successful IT companies. Looking to become a certified Microsoft professional? Download Braindump2go 2015 Latest Released 70-662 Exam Dumps Full Version and Pass 70-662 100%!

TS: Microsoft Exchange Server 2010, Configuring: 70-662



Questions and Answers : 507 Q&As
Updated: Jan 02, 2016
~~\$129.99~~ **\$99.99**
[PDF DEMO](#)
[CHECK OUT](#)

Product Description Exam Number/Code: 70-662
Exam Number/Code: 70-662
"TS: Microsoft Exchange Server 2010, Configuring", also known as 70-662 exam, is a Microsoft Certification. With the complete collection of questions and answers, Braindump2go has assembled to take you through 507 Q&As to your 70-662 Exam preparation. In the 70-662 exam resources, you will cover every field and category in Microsoft MCITP helping to ready you for your successful Microsoft Certification.
Free Demo Download
Braindump2go offers free demo for 70-662 exam (TS: Microsoft Exchange Server 2010, Configuring). You can check out the interface, question quality and usability of our practice exams before you decide to buy it.
☒ **Printable PDF** ☒ **Premium VCE + VCE Simulator**

FREE DOWNLOAD: NEW UPDATED 70-662 PDF Dumps &70-662 VCE Dumps from Braindump2go:
<http://www.braindump2go.com/70-662.html> 507 Q&As)