

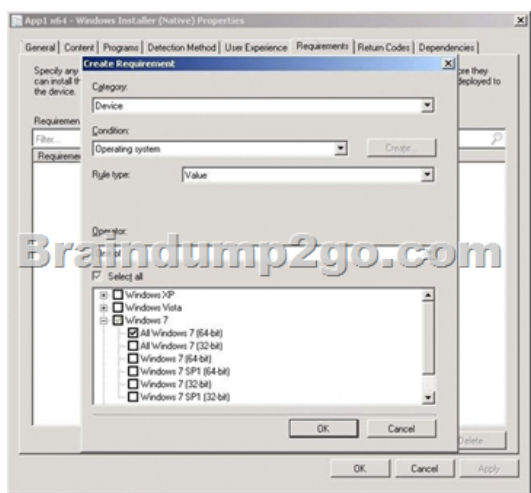
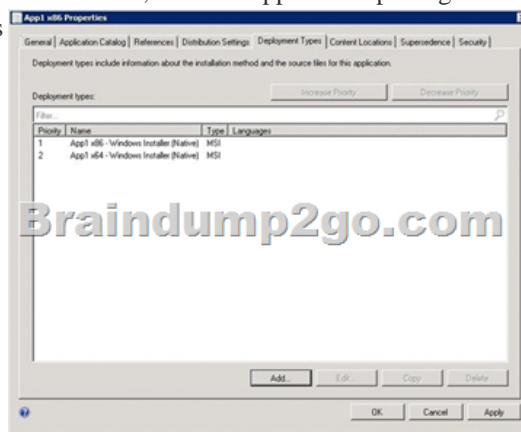
## [2016-April-NEWBraindump2go Free 70-243 Braindumps PDF Download

2016 April 70-243 New Questions and Answers Updated in Braindump2go Today! Exam Code: 70-243 Exam Name: Administering and Deploying System Center 2012 Configuration Manager Certification Provider: Microsoft Corresponding Certifications: MCTS, MCTS: Administering and Deploying System Center 2012 Configuration Manager 2016 New 70-243 Exam Topics: 1. Design and plan System Center Configuration Manager infrastructure 2. Manage operating system deployment (OSD) 3. Deploy applications and software updates 4. Manage compliance settings 5. Manage sites 6. Manage clients 7. Manage inventory 8. Manage reports and queries

New Added Questions and Answers: QUESTION You recently migrated from System Center 2012 Configuration Manager to System Center 2012 Configuration Manager. Your network contains a client computer that runs the 64-bit version of Windows 7 and the 32-bit version of Windows 7. Some client computers have the Microsoft Application Virtualization (App-V) client installed. You have an Application named App1. You have a 64-bit version of App1, a 32-bit version of App1, and a virtual version of App1. You need to deploy the Application to all of the client computers. The solution must minimize the amount of administrative effort. What should you do?

A. Create a new Application that has three different deployment types and create a target collection for each of the deployment types.  
B. Create a new Application that has three different deployment types and configure global conditions for each of the deployment types.  
C. Create a new package for each version of App1.  
D. Create a new Application for each version of App1.

Answer: B  
Explanation: Applications contain multiple deployment types that contain the files and commands necessary to install the software. For example, deployment types for a local installation, a virtual application package or a version of the application for mobile devices. MSI 64, 32 deployment types

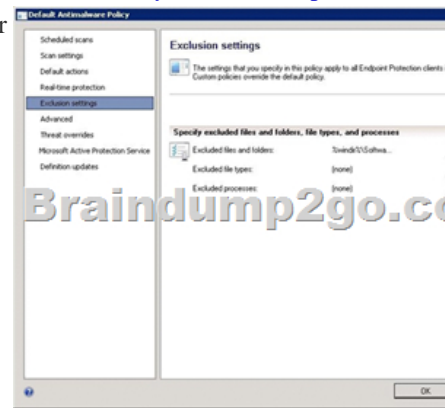


Deploy multiple type to multiple collection ( x64, x32, VirtualUserCollection) You don't choose to deploy a specific deployment type. Instead, you deploy the application itself. It's pretty simple in this case, with only one deployment type, as it's fairly obvious which one will be installed. But if you had multiple deployment types, you would need to specify rules to determine which one is used.

QUESTION Your company uses System Center 2012 Configuration Manager with Microsoft Forefront Endpoint Protection integration. You deploy Forefront Endpoint Protection to all client computers. The company uses a management Application named App1. You discover that Forefront Endpoint Protection blocks App1. You need to ensure that App1 can run. How should you

configure the Default Client Malware Policy? (Each correct answer presents a complete solution. Choose two.) A. Create a software restriction policy. B. Add a process exclusion. C. Add a file location exclusion. D. Modify the schedule scan settings. E.

Click the Use behavior monitoring check box. Answer: BCE Explanation: <http://technet.microsoft.com/en-us/library/hh508785.aspx>  
How to Create and Deploy Antimalware Policies for Endpoint Protection in Configuration Manager



QUESTION You have an Application named App1. You need to ensure that users in the finance department can install App1 by using the Application Catalog. What should you do? A. Create a required user deployment and target the deployment to all of the finance department users. B. Create a required user deployment and target the deployment to all of the client computers in the finance department. C. Create an available user deployment and target the deployment to all of the finance department users. D. Create an available user deployment and target the deployment to all of the client computers in the finance department. Answer: C

Explanation: By selecting "Available" it will be selectable for the users in the Application Catalog. The "Required" option would force the installation to all users in the finance department. QUESTION Your network contains a System Center 2012 Configuration Manager environment. You deploy a Microsoft Office 2007 package to all client computers by using Configuration Manager. Your company purchases Office 2010. You need to ensure that all users can install Office 2010 from the Application Catalog. What should you do? A. Deploy a new package for Office 2010. B. Deploy Office 2010 by using a Group Policy Object (GPO). C. Update the Office 2007 source file and redeploy the package. D. Deploy a new Application for Office 2010. Answer: D

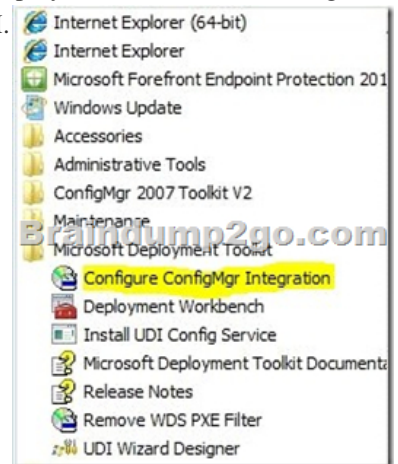
Explanation: <http://technet.microsoft.com/en-us/library/gg699369.aspx> Packages and Programs in Configuration Manager Microsoft System Center 2012 Configuration Manager continues to support packages and programs that were used in Configuration Manager 2007. You can use Microsoft System Center Configuration Manager Package Conversion Manager to convert packages and programs into Configuration Manager applications. Further information: <http://technet.microsoft.com/en-us/library/gg682125.aspx> Introduction to Application Management in Configuration Manager

QUESTION You deploy Windows 7 by using Operating System Deployment (OSD). The development task sequence contains steps to install software updates and Applications. The amount of time required to deploy the Windows 7 image has increased significantly during the last six months. You need to recommend a solution to reduce the amount of time it takes to deploy the image. What should you recommend? (Choose all that apply.) A. Synchronize software updates before deploying the image. B. Use offline servicing for the image. C. Create a new automatic deployment rule. D. Add an additional Install Software Updates step to the deployment task sequence. E. Upgrade the image to Windows 7 SP1. Answer: BE

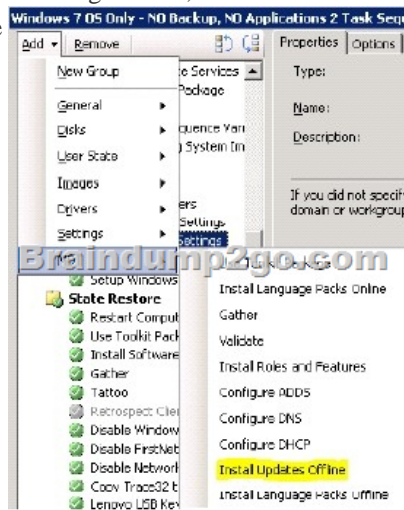
Explanation: [http://blogs.technet.com/b/inside\\_osd/archive/2011/04/18/configuration-manager-2012-](http://blogs.technet.com/b/inside_osd/archive/2011/04/18/configuration-manager-2012-offline-servicing-for-operating-system-images.aspx)

[offline-servicing-for-operating-system-images.aspx](http://blogs.technet.com/b/inside_osd/archive/2011/04/18/configuration-manager-2012-offline-servicing-for-operating-system-images.aspx) Configuration Manager 2012: Offline Servicing for Operating System Images In Configuration Manager 2012 there is a new feature for applying updates to operating system images while they are in the Configuration Manager library. This means any operating system image you see in the Operating Systems > Operating Systems Images node from the Software Library wunderbar can be updated with Component Based Servicing (CBS) updates. By updating an image in the Software Library instead of performing a new build and capture of the operating system image you will gain a few distinct advantages. You will be able to reduce the risk of vulnerabilities during operating system deployments and reduce the overall operating system deployment to the end user. You will also reduce the administrative effort to maintain your operating system images. The feature is applicable for Component Based Servicing (CBS) updates and for the following operating systems: Microsoft Windows Vista SP2 and later Microsoft Windows Server 2008 SP2 and later Microsoft Windows 7 RTM Microsoft Windows 2008 R2\* At the launch of ConfigMgr 2012 Beta 2 Microsoft Windows 7 SP1 and Windows Server 2008 R2 SP1 are not supported. They will be supported with Configuration Manager 2012 RTM. QUESTION You have Windows 7 .images that are rebuilt quarterly and sported to System Center 2012 Configuration Manager. The Microsoft Deployment Toolkit (MDT) 2012 is integrated with Configuration Manager. You need to reduce the network security risks when the images are deployed by using

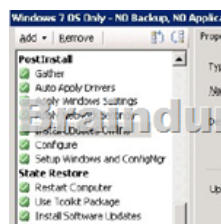
Operating System Deployment (OSD). What should you do? (Choose all that Apply.) A. After the Apply Operating System Image task sequence step, add a step to install software updates offline. B. Before the Apply Operating System image task sequence step, add a step to install Deployment Imaging Servicing and Management (DISM). C. After the installation of the final Application, add an Install Software Updates task sequence step. D. After the Apply Operating System Image task sequence step, add a Run Command line step that runs wuauclt.exe /detectnow. E. Before the Apply Operating System image task sequence step, add a step to install the Windows Automated Installation Kit (Windows AIK). Answer: ACE Explanation: With Config Manager 2012, software updates can be applied offline. A. We apply the OS image, then install software updates (windows updates) offline before starting the OS. C. Install software applications, then install updates (application updates) to the applications. INSTALLING SOFTWARE UPDATES DURING SCCM OSD Preparation: To be able to deploy software updates during the deployment of Windows 7 using SCCM, the Microsoft Deployment Toolkit (MDT) 2010 Update 1 must be integrated with SCCM.



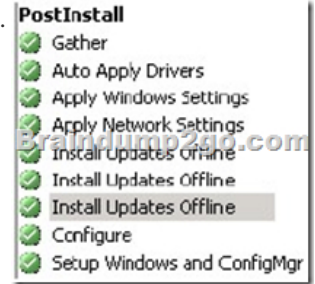
This integration will add MDT task sequences to SCCM. Adding the Install Updates Offline step to Task Sequence: To install software updates while Windows 7 is being deployed using SCCM, the Install Updates Offline task should be used in the task sequence used to deploy the OS. This task will install all the software updates included in a specific SCCM deployment package after the image has been applied to the disk. This task should be placed in the PostInstall group just before the Configure task. To insert the task, select the task just above the Configure task, and then click on Add in the pull-down menu bar on the top, highlight MDT and click on Install Updates Offline.



Configure the task by browsing to select the Updates package that contains the security updates that you want to install.



You can add as many Install Updates Offline tasks as needed as only one package can be included per task.



**QUESTION** You install a secondary site at a branch office. You discover that communication is not occurring between the secondary site and its parent site. You need to ensure two-way communication between the secondary site and its parent site. What should you do? A. On the parent site, create a standard sender address to the secondary site. B. On the parent site, create an asynchronous RAS sender to the secondary site. C. On the secondary site, create an asynchronous RAS sender to the parent site. D. On the secondary site, publish the Configuration Manager site information to Active Directory. Answer: A

**QUESTION** You have a secondary site at a branch office. The branch office is connected to the main office by a 512-Kbps (kilobits per second) WAN link. You need to eliminate all package distribution traffic on the WAN from the primary site between 3:00 P.M. and 5:00 P.M. Which two tasks should you do on the sender address? (Each correct answer presents part of the solution. Choose two.) A. Configure rate limits for the primary site. B. Configure pulse mode for the primary site. C. Configure pulse mode for the secondary site. D. Configure a schedule for the primary site. Answer: AD

**QUESTION** Currently, you collect software inventory data on a monthly basis. You need to ensure that all software inventory reports include data about software that was installed as recently as the past seven days. What should you do? A. Configure the software update point synchronization schedule to run every seven days. B. Create a custom Configuration Manager Web report to display all software inventory changes that occurred within the past seven days. C. Configure the Software Updates client agent to run every seven days. D. Configure the Software Inventory client agent to run every seven days. Answer: D

**QUESTION** Local client computers receive software updates from Configuration Manager. You need to ensure that remote client computers that connect to the virtual private network (VPN) are able to receive software updates. What should you do? A. Create a new site system, and configure it with the Software Update Point role. B. Create a new site system, and configure it with the SMS Provider role. C. Add the IP subnets that the VPN uses to the network discovery. D. Create a new site boundary, and add the IP subnets that the VPN uses to the site boundary. Answer: D

2016 Latest Microsoft 70-243 Exam PDF and VCE Dumps 128q Premium from Braindump2go: <http://www.braindump2go.com/70-243.html> 70-243 New Exam Questions and Answers from Google Drive: [https://drive.google.com/folderview?id=0B9YP8B9sF\\_gNeFNybGdGYU9wQVU&usp=sharing](https://drive.google.com/folderview?id=0B9YP8B9sF_gNeFNybGdGYU9wQVU&usp=sharing)

Compared Before Buying Microsoft 70-243 Exam PDF and VCE Dumps 128q Premium from Braindump2go	
Pass4sure	Braindump2go
Not In Stock	100% Pass OR Money Back
/	128 Q&As – Real Questions
/	\$99.99
/	Coupon Code: BDNT2014