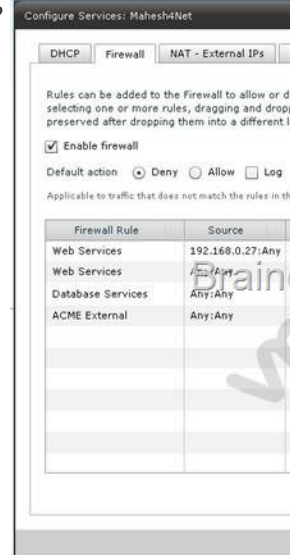
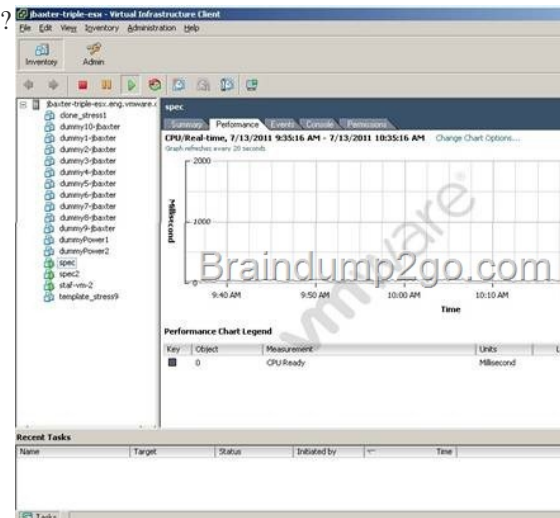


2014 Latest VMware VCPC510 Exam Dump Free Download!

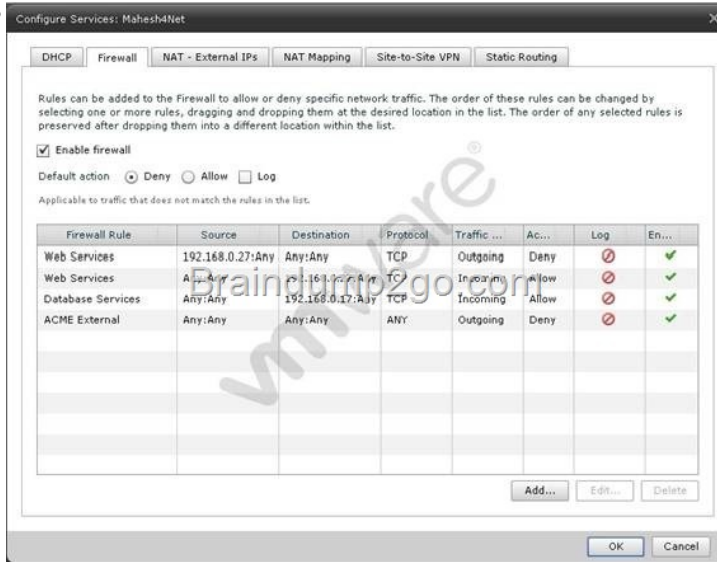
QUESTION 1 Which two actions must an administrator take before deleting a vApp network? (Choose two) A. Disconnect the vShield Edge device. B. Shut down all VMs within the vApp. C. Shut down all connected VMs. D. Disconnect all connected VMs. Answer: CD
QUESTION 2 Click the Exhibit button. ACME has a virtual machine with an IP address of 192.168.0.5 .It is running an SMTP mail service and is unable to communicate from the assigned network. The network is an External Routed network with the firewall rules displayed in the Exhibit. Which configuration change would correct this behavior?



A. Set the Destination IP address to 192.168.0.51. B. Disable the Web Server rule for the Incoming Traffic Type. C. Change the ACME External rule Traffic Type to Incoming. D. Set the ACME External rule to Allow. Answer: D
QUESTION 3 A vSphere 5 implementation contains two ESXi hosts, ESXi01 and ESXi02. There is a virtual machine "VM21" connected to Production port group on ESXi01. ESXi01 has: vSwitch0, single uplink to 4.1.20.0/24 Production port group VM kernel port group VM Kernel port for vMotion VM Kernel port for management vSwitch1, single uplink to 4.1.40.0/24 Engineering port group VM Kernel port for NFS storage ESXi02 has: vSwitch0, single uplink to 4.1.40.0/24 Engineering port group VM Kernel port for vMotion VM kernel port for management vSwitch1, single uplink to 4.1.40.0/24 Production port group VM Kernel port for NFS storage Which two statements are true about this configuration? (Choose two.) A. The vMotion network configuration is in valid. B. If VM 21 is migrated to ESXi02 it will not be available on the Production network. C. The virtual machine cannot be vMotion migrated to the target host. D. Broadcasts from the Production port group will not reach the Engineering port group. Answer: BD
QUESTION 4 An administrator needs to deploy vSM to support a vCD installation. How should the administrator proceed? A. Deploy the vSM appliance using vCenter. Prepare to configure with the enable command from the vSM console. Run setup. B. Deploy the vSM appliance using vCenter. Run setup. Register the vSM plugin. Initiate a synchronization with vSM. C. Deploy the vSM binaries to a RHEL 5 VM. Prepare to install with the enable command from the Vsm console. Run setup. D. Deploy the vSM binaries to a RHEL 5VM. Run setup initiate a synchronization with vSM from vCenter. Answer: A
QUESTION 5 Click the Exhibit button. Which change will eliminate the symptom in the performance chart shown in the exhibit?



A. Set CPU shares to High B. Set CPU affinity for the virtual machine C. Migrate the VM to host that is less utilized D. Add a CPU to the virtual machine
 Answer: C
 QUESTION 6 An existing port group-backed network pool has been fully provisioned (25 out of 25 networks have been deployed). How can an administrator provide greater capacity for creating additional Organizational Networks?
 A. Increase the number of networks in the network pool properties. B. Create a new network pool and attach it to the organization VDC C. Creat additional port groups on the vSphere Distributed Switch and add them to the network pool. D. Remove any configured vApp networks and re-create a largr network poo.
 Answer: C
 QUESTION 7 ACME has a Web Server virtual machine with an IP Address of 192.168.0.27. it is not responding to incoming customer requests on either internal or external networks. The network is an External Router network with the firewall rules displayed in the exhibit. Which configuration change would correct his behavior?



A. Change the Outgoing Web Services rule to Allow. B. Change the IP Address of the Incoming Web Services rule to 192.168.0.17. C. Change the IP Address of the Web Services Source 192.168.0.17. D. Delete the Outgoing Web Services rule.
 Answer: A
 QUESTION 8 An administrator needs to perform maintenance on an ESXi host that is part of a vCloud Provider vDC. The maintenance will include a host reboot. The management team requires that service remain uninterrupted for all virtual machines in the vCloud environment. Which two steps must the administrator take in to accomplish this? (Choose two.)
 A. Disable the ESXi host. B. Clone VMs to another ESXi host. C. Place the ESXi host in Maintenance Mode. D. Migrate VMs to another ESXi host.
 Answer: AD
 QUESTION 9 An administrator needs to configure and Edge Gateway router network for three organizations. The organizational VDCs are configured to use vSphere port group backed network pools backed by a vSphere Distributed Switch. How many port groups are automatically created upon completion of the Organization Network creation wizard?
 A. .1 B. 3 C. 0 D. 6
 Answer: C
 QUESTION 10 A new LUN has been provisioned to all hosts in a vSpher 5.x cluster. On one host a new VMFS datastore has been created. How will the new datastore be discovered by the other ESXi 5. x hosts?
 A. A rescan of all host bus adapters is periodically performed by ESXi hosts to detect new VMFS datastores. B. New VMFS volumes are automatically added to members of a cluster by v Center Server. C. A manual refresh is rewired on each ESXi host to discover new VMFS datastores. D. A refresh of all host bus adapters is periodically performed by ESXi hosts to detect new VMFS datastores.
 Answer: B
 Passing your VMware **VCPC510** Exam by using the latest VMware **VCPC510** Exam Dump Full Version:
<http://www.braindump2go.com/vcpc510.html>