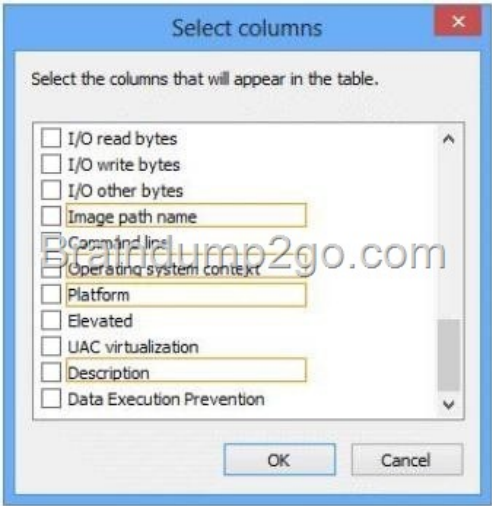
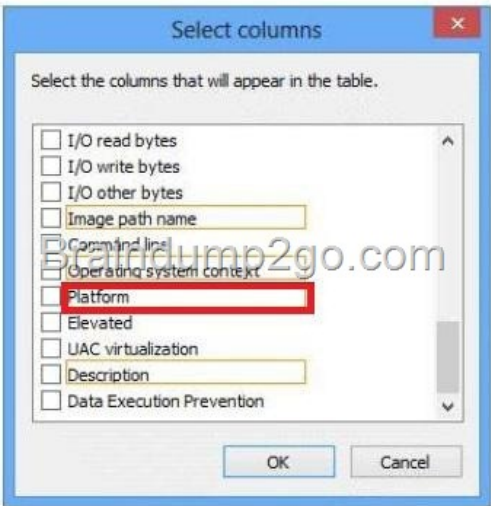


## 2014 Latest Microsoft 70-687 Exam Dump Free Download!(131-140)

QUESTION 131 Hotspot Question You administer Windows 8 Enterprise (64-bit) computers in your company network. For some applications, some computers run a 32-bit version of the application, and other computers run a 64-bit version of the application. You want to distribute a package that contains updates for the 32-bit applications only. You need to determine if a particular computer is running 32-bit or 64-bit versions of the applications. From the Select columns window, which column should you add to Task Manager? (To answer, select the appropriate column name in the answer area.)



Answer:



QUESTION 132 A company has client computers that run Windows XP or Windows Vista. The company plans to upgrade all client computers to Windows 8. You are planning a deployment strategy. You need to identify the elements that will be retained after the upgrades. Which elements will be retained? (To answer, drag the appropriate element or elements to the correct location or locations in the answer area. Elements may be used once, more than once, or not at all. You may need to drag the split bar between panes or scroll to view content.)

Elements	Answer Area
Programs and Windows settings	
Programs, user accounts, and user files	
User accounts and user files only	
User accounts and Windows settings only	
User accounts, user files, and Windows settings	

Upgrade path	Options retained
Windows XP to Windows 8	Element
Windows Vista to Windows 8	Element

Answer:

Elements

Programs and Windows settings

Programs, user accounts, and user files

User accounts and user files only

User accounts and Windows settings only

User accounts, user files, and Windows settings

Answer Area

Upgrade path	Options retained
Windows XP to Windows 8	User accounts and user files only
Windows Vista to Windows 8	User accounts, user files, and Windows settings

QUESTION 133 A company has an Active Directory Domain Services (AD DS) domain. All client computers run Windows 8. The company has three departments named Accounting, Human Resources (HR), and Marketing. User account objects are stored in their respective departmental AD security groups and have full access to shared folders for each department. A new company policy requires that the following access rules are in place: - Users must have complete access only to their department's shared folder. - Accounting department users must be able to change files in the HR folder. - HR department users must be able to change files in the Marketing folder. - Marketing department users must be able to change files in the Accounting folder. You need to comply with the company policy. Which permissions should you assign? (To answer, drag the appropriate security group or groups to the correct location or locations in the answer area. Security groups may be used once, more than once, or not at all. You may need to drag the split bar between panes or scroll to view content.)

Security Groups

Accounting

Users

Everyone

HR

Marketing

Answer Area

Shared folder	Access Control List	
	Full Control	Modify
Accounting	Security Group	Security Group
HR	Security Group	Security Group
Marketing	Security Group	Security Group

Answer:

Security Groups

Accounting

Users

Everyone

HR

Marketing

Answer Area

Shared folder	Access Control List	
	Full Control	Modify
Accounting	Accounting	Marketing
HR	HR	Accounting
Marketing	Marketing	HR

] QUESTION 134 You are troubleshooting communication issues on a computer that has Windows 8 Enterprise installed. The relevant portion of the computer configuration is displayed in the exhibit. (Click the Exhibit button.)

Local Group Policy Editor

File Action View Help

Local Computer Policy

Computer Configuration

Software Settings

Name Resolution Policy

Scripts (Startup/Shutdown)

Deployed Printers

Security Settings

Account Policies

Local Policies

Windows Firewall with Advanced Security

Network List Manager Policies

Public Key Policies

Software Restriction Policies

Application Control Policies

IP Security Policies on Local Computer

Advanced Audit Policy Configuration

System Audit Policies - Local Group F

Account Logon

Account Management

Detailed Tracking

OS Access

Login/Logoff

Object Access

Policy Change

Privilege Use

System

Global Object Access Auditing

Subcategory

Audit IPsec Driver

Audit Other System Events

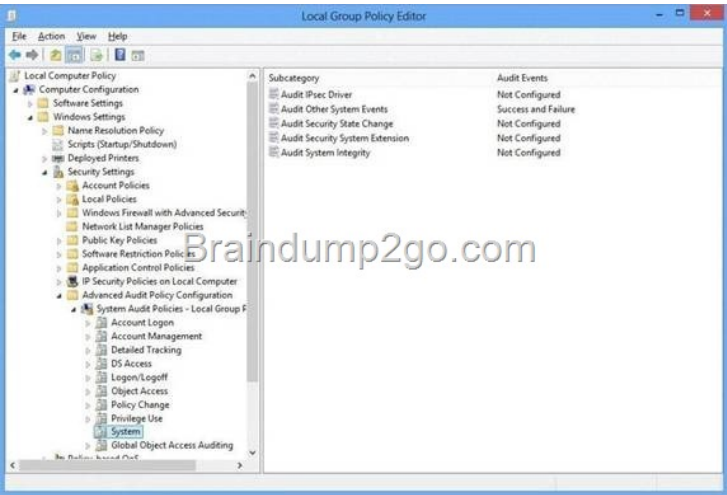
Audit Security State Change

Audit Security System Extension

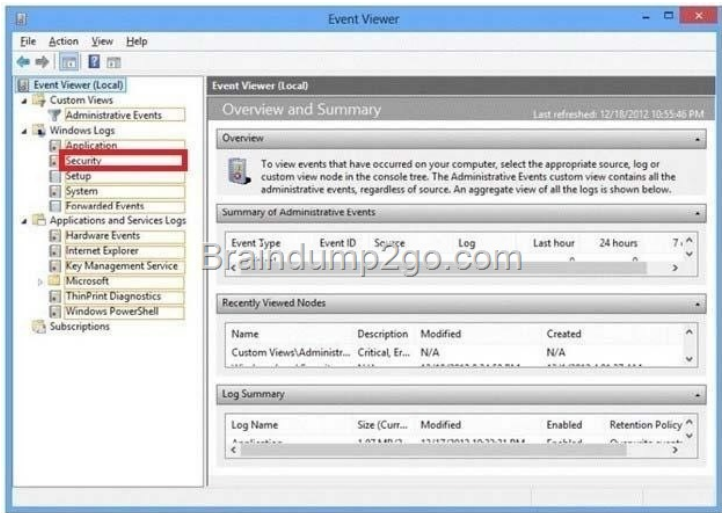
Audit System Integrity

You need to find the Windows Firewall service startup and shutdown events. In the Event Viewer, which event log should you

select? (To answer, select the appropriate log in the answer area.)



Answer:



QUESTION 135 You are preparing to deploy a new computer that runs Windows 8. You plan to copy the user's data from his current computer to the new computer. You need to generate a list of data that will be copied from his existing computer to the new computer. Which three actions should you perform in sequence? (To answer, move the appropriate actions from the list of actions to the answer area and arrange them in the correct order.)

Actions	Answer Area
Run Windows Easy Transfer Reports on the source computer.	
Run Windows Easy Transfer on the destination computer.	
Run Windows Easy Transfer Reports on the destination computer.	
Run Windows Easy Transfer on the source computer.	

Answer:

Actions	Answer Area
Run Windows Easy Transfer Reports on the source computer.	Run Windows Easy Transfer on the source computer.
	Run Windows Easy Transfer on the destination computer.
	Run Windows Easy Transfer Reports on the destination computer.

QUESTION 136 A local printer named PRINTER1 is shared from a client computer named COMPUTER1 that run a 32-bit version

of Windows 8. A workgroup contains client computers that run a 64-bit version of Windows 8. Computers in the workgroup can't currently print to PRINTER1. You need to ensure that the workgroup computers can print to PRINTER1. Which three actions should you perform in sequence? (To answer, move the appropriate actions to the answer area and arrange them in the correct order.)

Connect the workgroup computers to PRINTER1.

Add the driver on COMPUTER1.

Obtain the 32-bit driver for PRINTER1.

Obtain the 64-bit driver for PRINTER1.

Install the driver on one computer in the workgroup.

] Answer:

Install the driver on one computer in the workgroup.

Obtain the 64-bit driver for PRINTER1.

Add the driver on COMPUTER1.

Obtain the 32-bit driver for PRINTER1.

Connect the workgroup computers to PRINTER1.

QUESTION 137 A company has an Active Directory Domain Services (AD DS) domain. All client computers run Windows 8. Two computers named COMPUTER1 and COMPUTER2 are connected to one network switch and joined to the domain. Windows Firewall is turned off on both computers. You are planning a remote management solution. You have the following requirements: Ensure that COMPUTER1 can run remote commands on COMPUTER2. Test the solution by successfully running a command from COMPUTER1 that executes on COMPUTER2. You need to select the commands to run on COMPUTER1 and COMPUTER2 to meet the remote management requirements. Which commands should you run? (To answer, drag the appropriate command or commands to the correct location or locations in the answer area. Commands may be used once, more than once, or not at all. You may need to drag the split bar between panes or scroll to view content.)

wecutil -s COMPUTER2 ipconfig  
wininit /s COMPUTER2 ipconfig  
winrm quickconfig  
winrs quickconfig  
winrs -r:COMPUTER2 ipconfig

On this computer	Run this command
COMPUTER1	
COMPUTER2	

Answer:

wecutil -s COMPUTER2 ipconfig  
wininit /s COMPUTER2 ipconfig  
winrs quickconfig

On this computer	Run this command
COMPUTER1	winrs -r:COMPUTER2 ipconfig
COMPUTER2	winrs quickconfig

] Explanation: <http://technet.microsoft.com/en-us/library/dd163506.aspx> QUESTION 138 A company has client computers that run Windows 8. All client computers allow incoming Remote Desktop connections. You attempt to connect from COMPUTER1 to COMPUTER2 by using Remote Desktop. Remote Desktop cannot connect to the remote computer. You establish that the firewall settings on COMPUTER2 have not been set to allow incoming connections. From COMPUTER1, you need to enable Remote Desktop traffic through Windows Firewall on COMPUTER2. Which commands should you run? (To answer, drag the appropriate command or commands to the correct location or locations in the answer area. Commands may be used once, more than once, or not at all. You may need to drag the split bar between panes or scroll to view content.)

netsh  
service  
remoteadmin enable  
firewall set  
remotedesktop enable

C:\>psexec \\Computer2  
C:\>psexec \\Computer2

Answer:

C:\>psexec \\Computer2 netsh firewall set service remotedesktop enable



] Explanation: <http://docs.oseems.com/operatingsystem/windows/firewall-command> QUESTION 139 A desktop computer runs Windows 8. The computer is joined to an Active Directory Domain Services (AD DS) domain named contoso.com. You have two domain user accounts: - A primary account named User1 that does not have domain administrative privileges. - An account named Admin1 that has administrative privileges in the domain. You are currently logged in as User1. You need to run an application named appl.exe. You have the following requirements: Start the application by using your administrative credentials. Ensure that the user environment is fully available to the application. You need to complete the command to meet the requirements. Which command segments should you use to complete the command? (To answer, drag the appropriate command segments to the correct locations in the answer area. Command segments may be used once, more than once, or not at all. You may need to drag the split bar between panes or scroll to view content.)

Click here to enter text.

/profile

/noprofile

runas

contoso\admin1

contoso\user1

runonce

C:\> /user: appl.exe

] Answer: Click here to enter text.

/noprofile

contoso\user1

runonce

C:\> runas /profile /user: contoso\admin1 appl.exe

] QUESTION 140 A company has a branch office with client computers that run Windows 8. Files are saved locally on the client computers and are not backed up regularly. You need to ensure that you can retrieve previous versions of locally saved files from each client computer. Which three actions should you perform in sequence? (To answer, move the appropriate actions from the list of actions to the answer area and arrange them in the correct order.)

Configure File History to use the LocalArchive folder.

Create a folder named LocalArchive on the system drive.

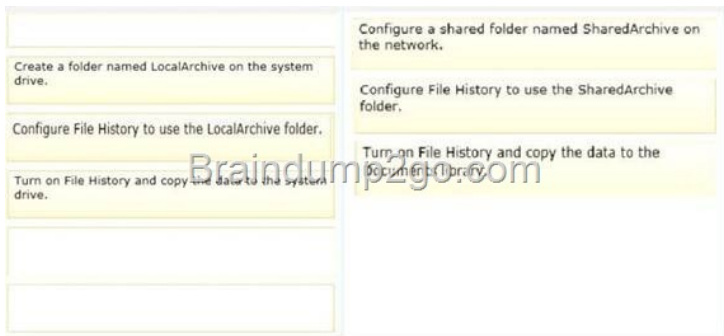
Turn on File History and copy the data to the Documents library.

Turn on File History and copy the data to the system drive.

Configure File History to use the SharedArchive folder.

Configure a shared folder named SharedArchive on the network.

Answer:



] Explanation: <http://blogs.msdn.com/b/b8/archive/2012/07/10/protecting-user-files-with-file-history.aspx> Passing Microsoft 70-687 Exam successfully in a short time! Just using Braindump2go's Latest Microsoft 70-687 Dump:  
<http://www.braindump2go.com/70-687.html>