

2014 Free Microsoft 70-687 Exam Study Guide(191-200)

QUESTION 191 You connect a portable Windows 8.1 computer to a corporate network by using a VPN connection. You are unable to access websites on the Internet only when you are using the VPN connection. You need to ensure that you can access websites when connected to the corporate network. What should you do? A. Configure the VPN connection to use only L2TP/IPSec. B. In the TCP/IPv4 properties of the VPN connection, disable the Use default gateway on remote network setting. C. Configure the VPN connection to use only PPTP. D. In the TCP/IPv4 properties of the VPN connection, enable the Use default gateway on remote network setting. E. In the TCP/IPv4 properties of the local area connection, disable the Automatic metric setting. Answer: E

QUESTION 192 You administer Windows 8.1 Pro computers in your company network. A server named Server1 runs Windows Server 2012. Server1 allows incoming VPN and Remote Desktop connections. A remote user requires access to files on Server1. You need to prevent the user from downloading any files from Server1 to his local computer. Your solution must ensure that the user can read the files on Server1. What should you do? A. Create a new VPN connection. Disable local drive mappings. B. Create a new VPN connection. Disable offline files. C. Create a new Remote Desktop connection. Set the Local Computer policy to Disable drives redirection for Remote Desktop Services. D. Create a new Remote Desktop connection. Set the Local Computer policy to Disable clipboard redirection for Remote Desktop Services. Answer: C

QUESTION 193 A company has an Active Directory Domain Services (AD DS) domain. The company has 20 Windows 8.1 tablet PCs that are connected to the domain. You need to configure an authentication method that simplifies the process of logging on to the tablet PCs and maximizes the security. Which authentication method should you configure? A. Active Directory user account B. PIN C. Picture password D. Microsoft account Answer: D

QUESTION 194 You install a new hard drive as drive D on a Windows 8.1 computer. The computer is shared by two users. You need to prevent either user from using more than half the available space on drive D of the computer. What should you do? A. Reconfigure drive D and create two volumes of equal size. B. Create a share for each user on drive D. C. Configure quota management on drive D. D. Configure Storage Spaces on drive D. Answer: C

QUESTION 195 Drag and Drop Question You have a Windows 8.1 computer. The drive on which your File History is stored is almost full. You need to move the File History storage location to another drive. Which three actions should you perform in sequence? (To answer, move the appropriate actions from the list of actions to the answer area and arrange them in the correct order.)

Actions	Answer Area
Move the stored file history from the old location to the new location.	
Open File History from Windows Explorer.	
In the File History window, choose the option to change the File History folder.	
In the File History window, choose the option to change the File History drive.	
Browse to the new storage location.	
Open File History from Control Panel.	

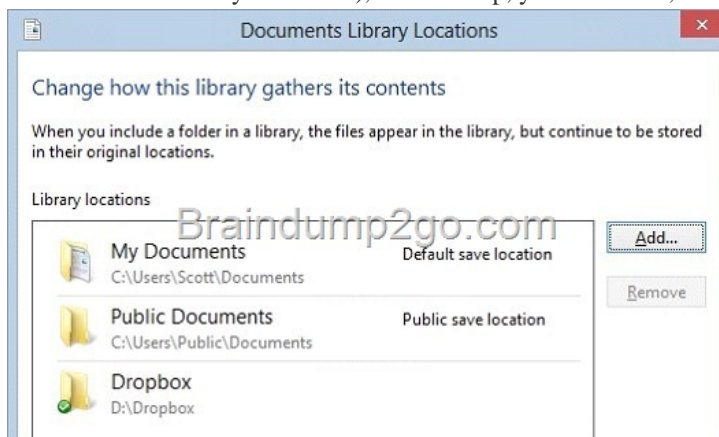
Answer:

Actions	Answer Area
Move the stored file history from the old location to the new location.	Move the stored file history from the old location to the new location.
Open File History from Windows Explorer.	
In the File History window, choose the option to change the File History folder.	In the File History window, choose the option to change the File History drive.
In the File History window, choose the option to change the File History drive.	
Browse to the new storage location.	Browse to the new storage location.
Open File History from Control Panel.	

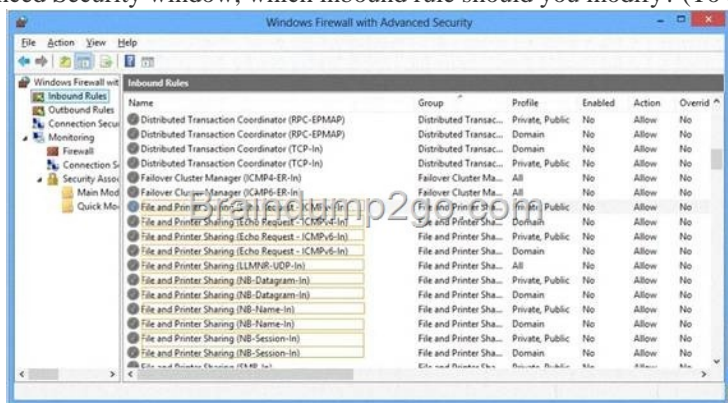
QUESTION 196 A company has 10 Windows 8.1 (64-bit) client computers. You plan to create backup resources to allow the recovery of Windows 8.1 on any of the client computers. You need to ensure that you can recover the computers from bootable media. What should you do? A. Turn on File History. B. Create a new pool and storage space. C. Run the Remove everything and install Windows feature. D. Run the bcdboot command. E. Run the recdisc command. Answer: E

QUESTION 197 A company has Windows 8.1 client computers. Employees use multiple Windows Store apps on the computers. An employee installs a

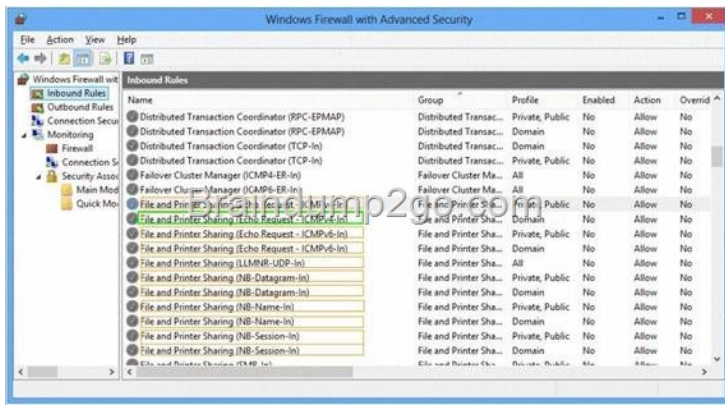
legacy app on his portable computer and then experiences problems with the computer. He installs two additional legacy apps and the problems increase. You need to return the computer to its default state and retain all user data and Windows Store apps. What should you do? A. Run the Remove everything and install Windows feature. B. Perform a system restore to the most recent restore point. C. Use Windows 7 File Recovery to restore all Windows system files. D. Run the Refresh your PC without affecting your files feature. Answer: B QUESTION 198 A company has Windows 8.1 client computers. A user stores files in multiple locations. You need to determine which of the locations will be included in File History. Which three of the following file locations are included in File History? (Each correct answer presents part of the solution. Choose three.) A. Public Documents and Public Pictures B. Contacts, Desktop, and Favorites C. All system files D. C:\Users and C:\ProgramData E. My Documents and My Pictures F. Desktop and Recycle Bin Answer: ABE Explanation: * File History has a predefined set of items that it backs up automatically: all your libraries (both default libraries and custom libraries you created), the Desktop, your Contacts, Internet Explorer favorites and the SkyDrive. * Library example:



QUESTION 199 You administer Windows 8.1 client computers in your company network. The company has an Active Directory Domain Services (AD DS) domain. The network uses a DHCP server. You want to assign a static dynamic host configuration protocol (DHCP) reservation for a client computer. You need to identify the media access control (MAC) address of the client computer. Which command should you use? A. ipconfig /allcompartments /all B. ipconfig /renew C. ipconfig /all D. ipconfig /flushdns Answer: C QUESTION 200 Hotspot Question You administer Windows 8.1 client computers in your company network. The computers belong to an Active Directory Domain Services (AD DS) domain and have Windows Firewall enabled. All of the computers are connected to the Internet. You ping one of the desktops, which has an IP Address of 10.4.4.4, but you receive the message "Request timed out." You need to configure the desktop to reply on ping requests. From the Windows Firewall with Advanced Security window, which inbound rule should you modify? (To answer, select the appropriate inbound rule in the answer area.)



Answer:



Download Free Microsoft 70-687 Exam Questions and Answers from Braindump2go: <http://www.braindump2go.com/70-687.html>