

## Official 2014 Latest Microsoft 70-411 Exam Dump Free Download(321-330)!

QUESTION 321 Your network contains an Active Directory domain named contoso.com. The domain contains two member servers named Server1 and Server2. All servers run Windows Server 2012 R2. Server1 and Server2 are nodes in a Hyper-V cluster named Cluster1. Cluster1 hosts 10 virtual machines. All of the virtual machines run Windows Server 2012 R2 and are members of the domain. You need to ensure that the first time a service named Service1 fails on a virtual machine, the virtual machine is moved to a different node. You configure Service1 to be monitored from Failover Cluster Manager. What should you configure on the virtual machine? A. From the Recovery settings of Service1, set the First failure recovery action to Restart the Service. B. From the Recovery settings of Service1, set the First failure recovery action to Take No Action. C. From the General settings, modify the Startup type. D. From the General settings, modify the Service status. Answer: B

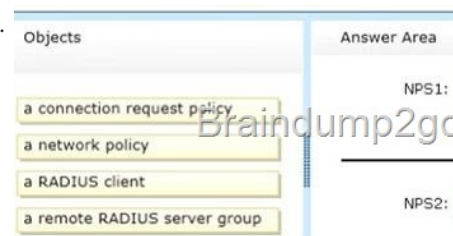
QUESTION 322 Your network contains two servers named Server1 and Server2. Both servers run Windows Server 2012 R2. On Server1, you create a Data Collector Set (DCS) named Data1. You need to export Data1 to Server2. What should you do first? A. Right-click Data1 and click Data Manager... B. Right-click Data1 and click Save template... C. Right-click Data1 and click Properties. D. Right-click Data1 and click Export list... Answer: B Explanation: <http://technet.microsoft.com/en-us/library/cc766318.aspx>

QUESTION 323 Your network contains an Active Directory domain named contoso.com. All domain controllers run Windows Server 2012 R2. An organizational unit (OU) named OU1 contains 200 client computers that run Windows 8 Enterprise. A Group Policy object (GPO) named GPO1 is linked to OU1. You make a change to GPO1. You need to force all of the computers in OU1 to refresh their Group Policy settings immediately. The solution must minimize administrative effort. Which tool should you use? A. The Set-AdComputercmdlet B. Group Policy Object Editor C. Active Directory Users and Computers D. Group Policy Management Console (GPMC) Answer: D Explanation: In the previous versions of Windows, this was accomplished by having the user run GPUUpdate.exe on their computer. Starting with Windows Server 2012 and Windows 8, you can now remotely refresh Group Policy settings for all computers in an OU from one central location through the Group Policy Management Console (GPMC). Or you can use the Invoke-GPUUpdate cmdlet to refresh Group Policy for a set of computers, not limited to the OU structure, for example, if the computers are located in the default computers container. Note: Group Policy Management Console (GPMC) is a scriptable Microsoft Management Console (MMC) snap-in, providing a single administrative tool for managing Group Policy across the enterprise. GPMC is the standard tool for managing Group Policy. Incorrect: Not B: Secedit configures and analyzes system security by comparing your current configuration to at least one template. Reference: Force a Remote Group Policy Refresh (GPUUpdate)

QUESTION 324 Your network contains an Active Directory domain named contoso.com. Network Access Protection (NAP) is deployed to the domain. You need to create NAP event trace log files on a client computer. What should you run? A. Logman B. Tracert C. Register-EngineEvent D. Register-ObjectEvent Answer: A

QUESTION 325 Your network contains an Active Directory domain named contoso.com. The domain contains client computers that run either Windows XP, Windows 7, or Windows 8. Network Policy Server (NPS) is deployed to the domain. You plan to create a system health validator (SHV). You need to identify which policy settings can be Applied to all of the computers. Which three policy settings should you identify? (Each correct answer presents part of the solution. Choose three.) A. A firewall is enabled for all network connections. B. An antispyware application is on. C. Automatic updating is enabled. D. Antivirus is up to date. E. Antispyware is up to date. Answer: ACD Explanation: \* System health agent (SHA) is a NAP component. \* System health agent (SHA) A component that checks the state of the client computer to determine whether the settings monitored by the SHA are up-to-date and configured correctly. For example, the Windows Security Health Agent (WSHA) can monitor Windows Firewall, whether antivirus software is installed, enabled, and updated, whether antispyware software is installed, enabled, and updated, and whether Microsoft Update Services is enabled and the computer has the most recent security updates from Microsoft Update Services. There might also be SHAs (and corresponding system health validators) available from other companies that provide different functionality.

QUESTION 326 Drag and Drop Question Your network contains an Active Directory forest named contoso.com. The forest contains a Network Policy Server (NPS) server named NPS1 and a VPN server named VPN1. VPN1 forwards all authentication requests to NPS1. A partner company has an Active Directory forest named adatum.com. The adatum.com forest contains an NPS server named NPS2. You plan to grant users from adatum.com VPN access to your network. You need to authenticate the users from adatum.com on VPN1. What should you create on each NPS server? To answer, drag the appropriate objects to the correct NPS servers. Each object may be used once, more than once, or not at all. You may need to drag the split bar between panes or scroll to view content.



Answer:

Objects

a connection request policy

a network policy

a RADIUS client

a remote RADIUS server group

Answer Area

NPS1: a connection request policy

a remote RADIUS server group

NPS2: a RADIUS client

] QUESTION 327 Hotspot Question Your network contains an Active Directory domain named contoso.com. The domain contains the users shown in the following table.

User name	Member of
User1	Group1
User2	Group2
User3	Group3

You have a Network Policy Server (NPS) server that has the network policies shown in the following table.

Policy name	Condition
Policy1	Date and time restriction: Sunday 00:00 to Saturday 23:59
Policy2	Membership of: CONTOSO\Group1
Policy3	Membership of: CONTOSO\Group2, CONTOSO\Group3

User1, User2, and User3 plan to connect to the network by using a VPN. You need to identify which network policy will apply to each user. What should you identify? To answer, select the appropriate policy for each user in the answer area.

Answer Area

User1: 

Policy1

Policy2

Policy3

User2: 

Policy1

Policy2

Policy3

User3: 

Policy1

Policy2

Policy3

Answer:

Answer Area

User1: 

Policy1

Policy2

Policy3

User2: 

Policy1

Policy2

Policy3

User3: 

Policy1

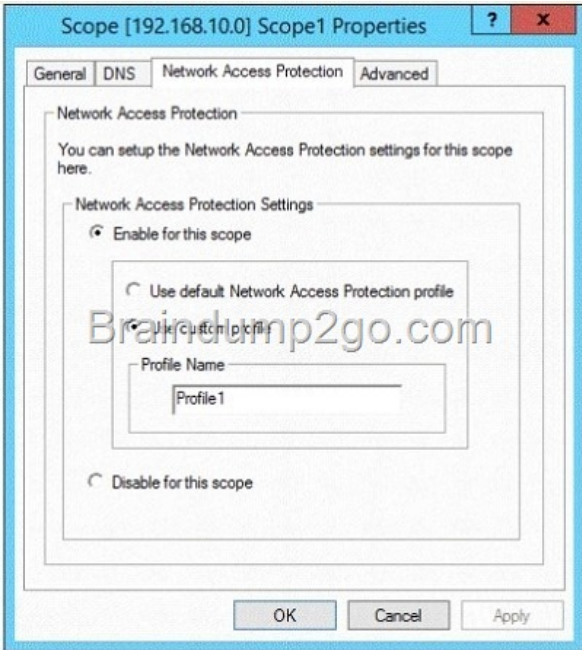
Policy2

Policy3

] QUESTION 328 Hotspot Question Your network contains an Active Directory domain named contoso.com. The domain contains two servers named Server1 and Server2. Server1 has the Network Policy Server server role installed. Server2 has the DHCP Server server role installed. Both servers run Windows Server 2012 R2. You are configuring Network Access Protection (NAP) to use DHCP enforcement. You configure a DHCP scope as shown in the exhibit. (Click the Exhibit button.)

Output as PDF file has been powered by [ [Universal Post Manager](#) ] plugin from [www.ProfProjects.com](#)

| Page 2/4 |



You need to ensure that non-compliant NAP clients receive different DHCP options than compliant NAP clients. What should you configure on each server? To answer, select the appropriate options for each server in the answer area.

Answer Area

Server1: 

- Health Policies
- Identity-Type
- MS-Service Class
- Service-Type

Server2: 

- filters
- a policy
- scope options
- server options
- a User class
- a Vendor class

Answer:

Answer Area

Server1: 

- Health Policies
- Identity-Type
- MS-Service Class
- Service-Type

Server2: 

- filters
- a policy
- scope options
- server options
- a User class
- a Vendor class

QUESTION 329 Your network contains an Active Directory domain named contoso.com. All servers run Windows Server 2012 R2. The domain contains a server named Server1 that has the Network Policy Server server role and the Remote Access server role installed. The domain contains a server named Server2 that is configured as a RADIUS server. Server1 provides VPN access to external users. You need to ensure that all of the VPN connections to Server1 are logged to the RADIUS server on Server2. What should you run? A. Add-RemoteAccessRadius -ServerNameServer1 -AccountingOnOffMsg Enabled - SharedSecret "Secret" -Purpose Accounting B. Set-RemoteAccessAccounting -AccountingOnOffMsg Enabled -AccountingOnOffMsg Enabled C. Add-RemoteAccessRadius -ServerName Server2 -AccountingOnOffMsg Enabled - SharedSecret "Secret" -Purpose Accounting D.

Set-RemoteAccessAccounting -EnableAccountingType Inbox -AccountingOnOffMsg Enabled Answer: C QUESTION 330 Your network contains four Network Policy Server (NPS) servers named Server1, Server2, Servers, and Server4. Server1 is configured as a RADIUS proxy that forwards connection requests to a remote RADIUS server group named Group1. You need to ensure that Server2 and Server3 receive connection requests. Server4 must only receive connection requests if both Server2 and Server3 are unavailable. How should you configure Group1? A. Change the Weight of Server4 to 10. B. Change the Weight of Server2 and Server3 to 10. C. Change the Priority of Server2 and Server3 to 10. D. Change the Priority of Server4 to 10. Answer: D Explanation: During the NPS proxy configuration process, you can create remote RADIUS server groups and then add RADIUS servers to each group. To configure load balancing, you must have more than one RADIUS server per remote RADIUS server group. While adding group members, or after creating a RADIUS server as a group member, you can access the Add RADIUS server dialog box to configure the following items on the Load Balancing tab: Priority. Priority specifies the order of importance of the RADIUS server to the NPS proxy server. Priority level must be assigned a value that is an integer, such as 1, 2, or 3. The lower the number, the higher priority the NPS proxy gives to the RADIUS server. For example, if the RADIUS server is assigned the highest priority of 1, the NPS proxy sends connection requests to the RADIUS server first; if servers with priority 1 are not available, NPS then sends connection requests to RADIUS servers with priority 2, and so on. You can assign the same priority to multiple RADIUS servers, and then use the Weight setting to load balance between them. Weight. NPS uses this Weight setting to determine how many connection requests to send to each group member when the group members have the same priority level. Weight setting must be assigned a value between 1 and 100, and the value represents a percentage of 100 percent. For example, if the remote RADIUS server group contains two members that both have a priority level of 1 and a weight rating of 50, the NPS proxy forwards 50 percent of the connection requests to each RADIUS server. Advanced settings. These failover settings provide a way for NPS to determine whether the remote RADIUS server is unavailable. If NPS determines that a RADIUS server is unavailable, it can start sending connection requests to other group members. With these settings you can configure the number of seconds that the NPS proxy waits for a response from the RADIUS server before it considers the request dropped; the maximum number of dropped requests before the NPS proxy identifies the RADIUS server as unavailable; and the number of seconds that can elapse between requests before the NPS proxy identifies the RADIUS server as unavailable. The default priority is 1 and can be changed from 1 to 65535. So changing server 2 and 3 to priority 10 is not the way to go.

**Edit RADIUS Server**

Address | Authentication/Accounting | **Load Balancing**

The priority of ranking indicates the status of a server. A primary server has a priority of 1.

Weight is used to calculate how often request are sent to a specific server in servers that have the same priority.

Priority:  Weight:

**Advanced settings**

Number of seconds without response before request is considered dropped:

Maximum number of dropped requests before server is identified as unavailable:

Number of seconds between requests when server is identified as unavailable:

OK Cancel

[http://technet.microsoft.com/en-us/library/dd197433\(WS.10\).aspx](http://technet.microsoft.com/en-us/library/dd197433(WS.10).aspx) Passing Microsoft 70-411 Exam successfully in a short time! Just using Braindump2go's Latest Microsoft 70-411 Dump: <http://www.braindump2go.com/70-411.html>