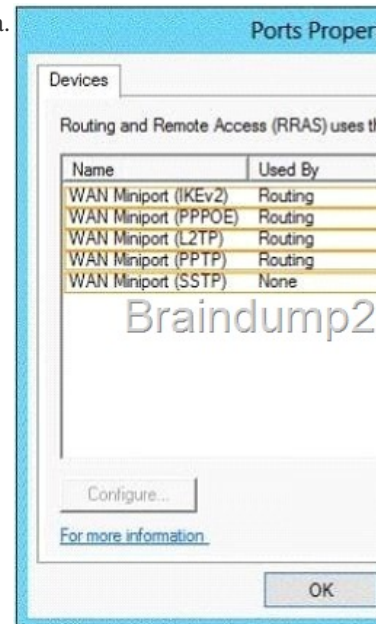
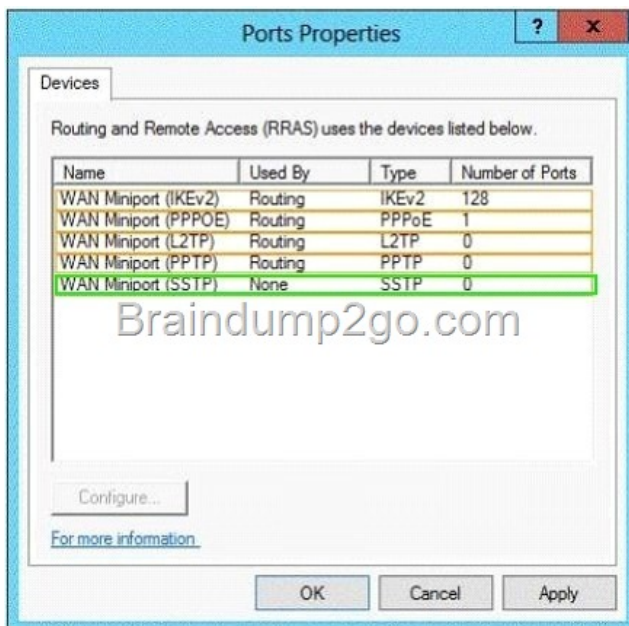


## Official 2014 Latest Microsoft 70-411 Exam Dump Free Download(181-190)!

QUESTION 181 You have a server named Server1 that runs Windows Server 2012 R2. Server1 has the Remote Access server role installed. You need to configure the ports on Server1 to ensure that client computers can establish VPN connections to Server1 by using TCP port 443. What should you modify? To answer, select the appropriate object in the answer area.



Answer:



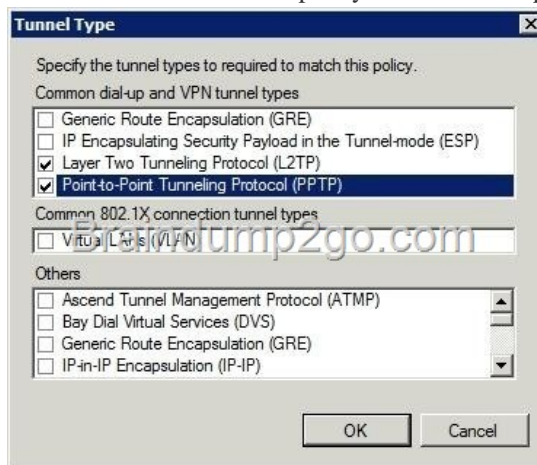
Explanation: [http://technet.microsoft.com/en-us/library/cc771298\(v=ws.10\).aspx](http://technet.microsoft.com/en-us/library/cc771298(v=ws.10).aspx) Secure Socket Tunneling Protocol (SSTP) is a new tunneling protocol that uses the HTTPS protocol over TCP port 443 to pass traffic through firewalls and Web proxies that might block PPTP and L2TP/IPsec traffic. QUESTION 182 Your network contains two Active Directory domains named contoso.com and adatum.com. The network contains a server named Server1 that runs Windows Server 2012 R2. Server1 has the DNS Server server role installed. Server1 has a copy of the contoso.com DNS zone. You need to configure Server1 to resolve names in the adatum.com domain. The solution must meet the following requirements: - Prevent the need to change the configuration of the current name servers that host zones for adatum.com. - Minimize Administrative effort. Which type of zone should you create? A. Primary B. Secondary C. Reverse lookup D. Stub Answer: D Explanation: A. When a zone that this DNS server hosts is a primary zone, the DNS server is the primary source for information about this zone, and it stores the master copy of zone data in a local file or in AD DS. B. When a zone that this DNS server hosts is a secondary zone, this DNS server is a secondary source for information about this

zone. The zone at this server must be obtained from another remote DNS server computer that also hosts the zone C. clients use a known IP address and look up a computer name based on its address. A reverse lookup takes the form of a question, such as "Can you tell me the DNS name of the computer that uses the IP address 192.168.1.20?" D. When a zone that this DNS server hosts is a stub zone, this DNS server is a source only for information about the authoritative name servers for this zone. The zone at this server must be obtained from another DNS server that hosts the zone. - Prevents Change to current zone

<http://technet.microsoft.com/en-us/library/cc771898.aspx> <http://technet.microsoft.com/en-us/library/cc730980.aspx> QUESTION 183

Your network contains two servers named Server1 and Server2. Both servers run Windows Server 2012 R2 and have the DNS Server server role installed. On Server1, you create a standard primary zone named contoso.com. You need to ensure that Server2 can host a secondary zone for contoso.com. What should you do from Server1? A. Add Server2 as a name server. B. Convert contoso.com to an Active Directory-integrated zone. C. Create a zone delegation that points to Server2. D. Create a trust anchor named Server2. Answer: A Explanation: A. You must add a new Name Server. To add a name server to the list of authoritative servers for the zone, you must specify both the server's IP address and its DNS name. When entering names, click Resolve to resolve the name to its IP address prior to adding it to the list. B. Instead of adding standard secondary DNS servers, you can convert the server from a primary DNS server to an Active Directory Integrated Primary server and configure another domain controller to be a DNS server C. You can divide your Domain Name System (DNS) namespace into one or more zones. You can delegate management of part of your namespace to another location or department in your organization by delegating the management of the corresponding zone. <http://technet.microsoft.com/en-us/library/cc770984.aspx> <http://support.microsoft.com/kb/816101>

<http://technet.microsoft.com/en-us/library/cc753500.aspx> [http://technet.microsoft.com/en-us/library/cc771640\(v=ws.10\).aspx](http://technet.microsoft.com/en-us/library/cc771640(v=ws.10).aspx) [http://technet.microsoft.com/en-us/library/ee649280\(v=ws.10\).aspx](http://technet.microsoft.com/en-us/library/ee649280(v=ws.10).aspx) QUESTION 184 You have a server named Server1 that runs Windows Server 2012 R2. Server1 has the Remote Access server role installed. On Server1, you create a network policy named Policy1. You need to configure Policy1 to apply only to VPN connections that use the L2TP protocol. What should you configure in Policy1? A. The Tunnel Type B. The Service Type C. The NAS Port Type D. The Framed Protocol Answer: A Explanation: A. Restricts the policy to only clients that create a specific type of tunnel, such as PPTP or L2TP. B. Restricts the policy to only clients specifying a certain type of service, such as Telnet or Point to Point Protocol connections. C. Allows you to specify the type of media used by the client computer to connect to the network. D. Restricts the policy to clients that specify a certain framing protocol for incoming packets, such as PPP or SLIP.

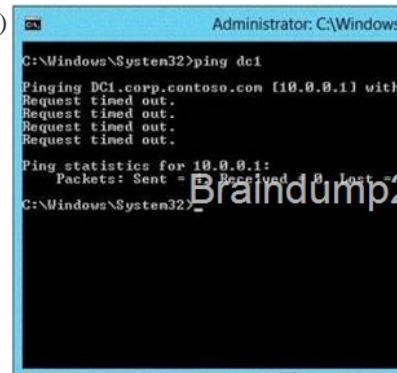


[http://technet.microsoft.com/en-us/library/cc731220\(v=ws.10\).aspx](http://technet.microsoft.com/en-us/library/cc731220(v=ws.10).aspx) QUESTION 185 Your network contains an Active Directory domain named contoso.com. The domain contains a domain controller named DC1 that runs Windows Server 2012 R2. All client computers run Windows 8 Enterprise. DC1 contains a Group Policy object (GPO) named GPO1. You need to deploy a VPN connection to all users. What should you configure from User Configuration in GPO1? A. Preferences/Control Panel Settings/Network Options B. Policies/Administrative Templates/Windows Components/Windows Mobility Center C. Policies/Administrative Templates/Network/Windows Connect Now D. Policies/Administrative Templates/Network/Network Connections Answer: A Explanation: A. The Network Options extension allows you to centrally create, modify, and delete dial-up networking and virtual private network (VPN) connections. Before you create a network option preference item, you should review the behavior of each type of action possible with the extension. <http://technet.microsoft.com/en-us/library/cc772449.aspx>

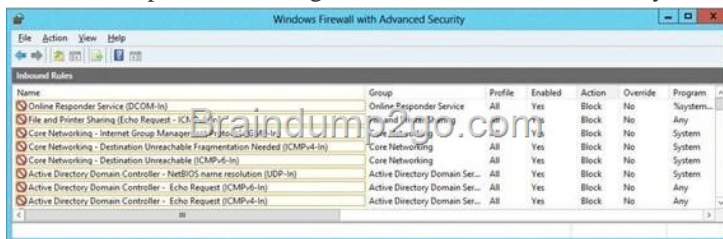
QUESTION 186 Your network contains an Active Directory domain named contoso.com. All servers run Windows Server 2012 R2. All sales users have laptop computers that run Windows 8. The sales computers are joined to the domain. All user accounts for the

sales department are in an organizational unit (OU) named Sales\_OU. A Group Policy object (GPO) named GPO1 is linked to Sales\_OU. You need to configure a dial-up connection for all of the sales users. What should you configure from User Configuration in GPO1? A. Policies/Administrative Templates/Network/Windows Connect Now B. Policies/Administrative Templates/Windows Components/Windows Mobility Center C. Preferences/Control Panel Settings/Network Options D. Policies/Administrative Templates/Network/Network Connections Answer: C Explanation:

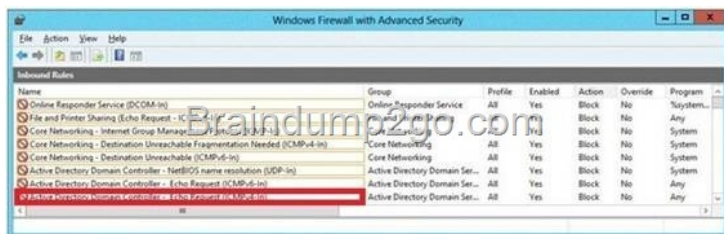
<http://technet.microsoft.com/en-us/library/cc772107.aspx> QUESTION 187 You have a server named Server1 that runs Windows Server 2012 R2. Server1 has 2 dual-core processors and 16 GB of RAM. You install the Hyper-V server role in Server1. You plan to create two virtual machines on Server1. You need to ensure that both virtual machines can use up to 8 GB of memory. The solution must ensure that both virtual machines can be started simultaneously. What should you configure on each virtual machine? A. Dynamic Memory B. NUMA topology C. Memory weight D. Resource Control Answer: A QUESTION 188 Your network contains an Active Directory domain named corp.contoso.com. The domain contains a domain controller named DC1. When you run ping dcl.corp.contoso.com, you receive the result as shown in the exhibit. (Click the Exhibit button.)



You need to ensure that DC1 can respond to the Ping command. Which rule should you modify? To answer, select the appropriate rule in the answer area.



Answer:



QUESTION 189 You have a server named Server1 that runs Windows Server 2012 R2. You promote Server1 to domain controller. You need to view the service location (SVR) records that Server1 registers on DNS. What should you do on Server1? A. Open the Srv.sys file B. Open the Netlogon.dns file C. Run ipconfig/displaydns D. Run Get-DnsServerDiagnostics Answer: B

QUESTION 190 Your company has a remote office that contains 600 client computers on a single subnet. You need to select a subnet mask for the network that will support all of the client computers. The solution must minimize the number of unused addresses. Which subnet mask should you select? A. 255.255.252.0 B. 255.255.254.0 C. 255.255.255.0 D. 255.255.255.128 Answer: A Passing Microsoft 70-411 Exam successfully in a short time! Just using Braindump2go's Latest Microsoft 70-411 Dump:

<http://www.braindump2go.com/70-411.html>