

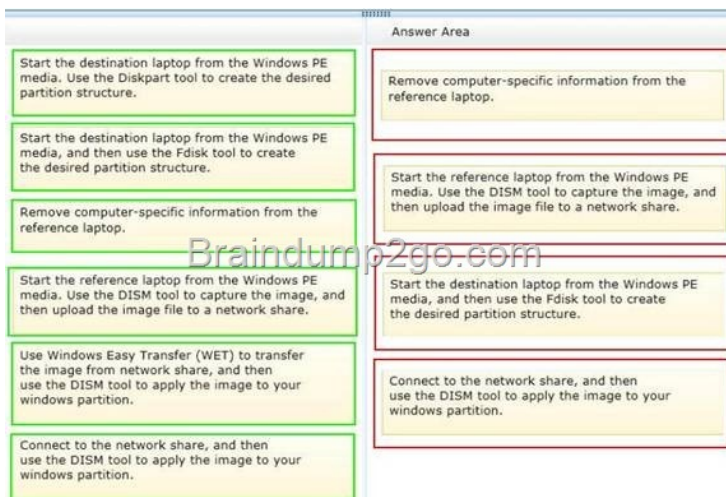
2014 Latest Microsoft 70-688 xam Dump Free Download!(1-10)

70-688 Dumps QUESTION 1 You administer client computers that run Windows 8 Enterprise deployed by using Windows Deployment Services (WDS). Your company recently purchased 25 new tablets that run Windows 8 Pro. For all 25 new tablets, you want to replace the existing Windows 8 Pro installation with Windows 8 Enterprise. You need to deploy the Windows 8 Enterprise image to all 25 tablets simultaneously by using the existing WDS infrastructure. What should you do? A. Start the tablets from the Windows To Go workspace. B. Start the tablets from a USB flash drive with a customized Windows Preinstallation Environment (WinPE). C. Start the tablets normally. Map the Windows Image (WIM) file from a WDS network share. D. Start the tablets from a customized Windows Recovery Environment (WinRE). Answer: A QUESTION 2 Drag and Drop Questions Your company recently purchased 25 new laptops. All 25 laptops have the same hardware configuration and do not have any operating system installed. You have been asked to deploy Windows 8 on these laptops. You have installed and configured Windows 8 on a reference laptop. You need to create an image and deploy it to the 25 new laptops. Which four actions should you perform in sequence? (To answer, move the appropriate actions from the list of actions to the answer area and arrange them in the correct order.)



- Start the destination laptop from the Windows PE media. Use the Diskpart tool to create the desired partition structure.
- Start the destination laptop from the Windows PE media, and then use the Fdisk tool to create the desired partition structure.
- Remove computer-specific information from the reference laptop.
- Start the reference laptop from the Windows PE media. Use the DISM tool to capture the image, and then upload the image file to a network share.
- Use Windows Easy Transfer (WET) to transfer the image from network share, and then use the DISM tool to apply the image to your windows partition.
- Connect to the network share, and then use the DISM tool to apply the image to your windows partition.

Answer:



Answer Area

- Remove computer-specific information from the reference laptop.
- Start the reference laptop from the Windows PE media. Use the DISM tool to capture the image, and then upload the image file to a network share.
- Start the destination laptop from the Windows PE media, and then use the Fdisk tool to create the desired partition structure.
- Connect to the network share, and then use the DISM tool to apply the image to your windows partition.

Explanation: Note: * You can create a reference computer by deploying Windows, and then removing the computer-specific information from the system. * On the destination computer, you will create a structure for the partitions where you apply your images. The partition structure on the destination computer must match the partition structure of the reference computer. * Use the Diskpart tool and the DISM tool to apply Windows images to one or more partitions onto a computer for deployment. * Use the DISM tool to apply images to your Windows partition. Reference: How to Capture Images of Hard Disk Partitions by Using DISM Reference: How to Apply Images by Using DISM QUESTION 3 Drag and Drop Questions You administer computers that run windows 7 and Windows 8. You run an application that saves files that contain local settings unique to each user. You want to allow users to synchronize settings for an application to any enterprise computer when they log on to the enterprise computer. You need to implement a solution that will move a user's settings files to any computer. You also need to ensure that you can roll back the

changes if necessary. Which required task or tasks should you perform with each approach? (To answer, drag the appropriate required task to the corresponding approach. Each required task may be used once, more than once, or not at all. You may need to drag the split bar between panes or scroll to view content.)

Required Task	Approach
Create a settings location template.	Generator
Place the settings location template.	Template Catalog Path
Enable Folder Redirection.	Microsoft Desktop Optimization Pack (MDOP)
Deploy the User Experience Virtualization (UE-V) Agent.	

Answer:

Generator	Create a settings location template.
Template Catalog Path	Place the settings location template.
Microsoft Desktop Optimization Pack (MDOP)	Deploy the User Experience Virtualization (UE-V) Agent.

] Explanation: Note: * Microsoft User Experience Virtualization (UE-V) uses settings location templates to roam application settings between user computers. Some standard settings location templates are included with User Experience Virtualization. You can also create, edit, or validate custom settings location templates with the UE-V Generator. * Settings template catalog The User Experience Virtualization settings template catalog is a folder path on UE-V computers or a Server Message Block (SMB) network share that stores all the custom settings location templates. The UE-V agent retrieves new or updated templates from this location. The UE-V agent checks this location once each day and updates its synchronization behavior based on the templates in this folder. Templates that were added or updated in this folder since the last time that the folder was checked are registered by the UE-V agent. The UE-V agent deregisters templates that are removed from this folder. By default, templates are registered and unregistered one time per day at 3:30 A.M. local time by the task scheduler. * The Microsoft Desktop Optimization Pack (MDOP) is a suite of technologies available as a subscription for Software Assurance customers. MDOP virtualization technologies help personalize the user experience, simplify application deployment, and improve application compatibility with the Windows operating system (UE-V/App-V/MED-V). Additionally, MDOP helps manage, monitor, and deploy key Windows features (MBAM/AGPM). Using MDOP shifts desktop repair from reactive to proactive, saving time and removing challenges associated with troubleshooting and repairing system failures (DaRT). Reference: Create UE-V Settings Location Templates with the UE-V Generator QUESTION 4 Drag and Drop Questions You support a computer that runs Windows 8 Enterprise. You want to create a dual-boot configuration by using the native boot virtual hard disk (VHD) method. You need to create an alternate Windows 8 installation. Which three actions should you perform in sequence? (To answer, move the appropriate actions from the list of actions to the answer area and arrange them in the correct order.)

Answer Area

- Update the system partition by using the Bootrec tool, and then modify the boot menu by using the BCDedit tool.
- Update the system partition by using the BCDedit tool, and then modify the boot menu by using the Bootrec tool.
- Install Windows 8 into a virtual hard disk (VHD) file.
- Edit the boot configuration by using the BCDedit tool on the virtual hard disk (VHD).
- Use the Computer Management console to create a virtual hard disk (VHD) file, and then create an active primary partition.
- Use Windows System Image Manager to create a virtual hard disk (VHD) file, and then create an active primary partition.
- Edit the boot configuration by using the BCDedit tool on the original Windows 8 installation.

Answer:

Answer Area

- Update the system partition by using the Bootrec tool, and then modify the boot menu by using the BCDedit tool.
- Update the system partition by using the BCDedit tool, and then modify the boot menu by using the Bootrec tool.
- Install Windows 8 into a virtual hard disk (VHD) file.
- Edit the boot configuration by using the BCDedit tool on the virtual hard disk (VHD).
- Use the Computer Management console to create a virtual hard disk (VHD) file, and then create an active primary partition.
- Use Windows System Image Manager to create a virtual hard disk (VHD) file, and then create an active primary partition.
- Edit the boot configuration by using the BCDedit tool on the original Windows 8 installation.
- Use Windows System Image Manager to create a virtual hard disk (VHD) file, and then create an active primary partition.
- Install Windows 8 into a virtual hard disk (VHD) file.
- Edit the boot configuration by using the BCDedit tool on the original Windows 8 installation.

QUESTION 5 Drag and Drop Questions You support computers that run Windows 8 Enterprise. Company policy requires that Microsoft Internet Explorer be the only browser allowed and supported. You collect software metering data and discover that several users are running other third-party browsers. You need to block other web browsers from running on the computers. All other applications should be allowed. Which three actions should you perform in sequence? (To answer, move the appropriate actions from the list of actions to the answer area and arrange them in the correct order.)

Answer Area

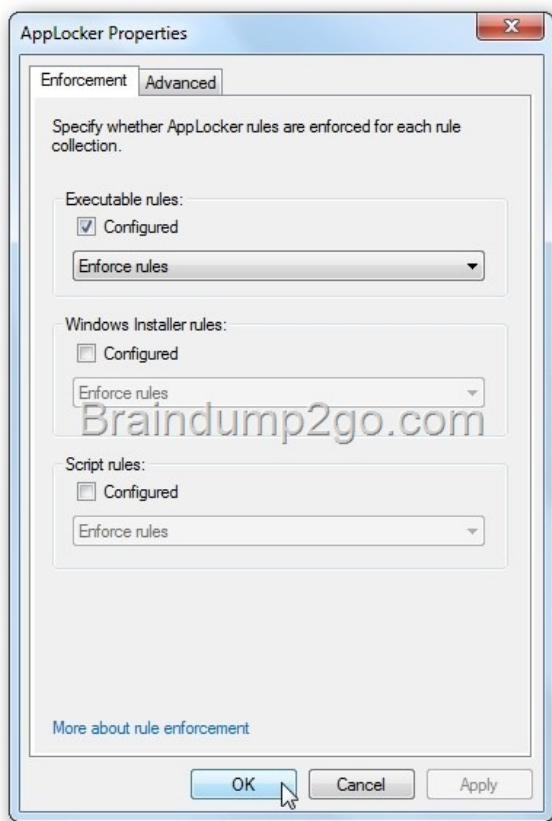
- Open **User Configuration of Local Computer Policy**.
- Open **Computer Configuration of Local Computer Policy**.
- Enforce Script rules.
- Create new AppLocker Deny Script rules.
- Create new AppLocker Deny Executable rules.
- Enforce Executable rules.
- Select **Software Restriction Policies** and set the default to **Disallowed**.

Answer:

Answer Area

- Open **User Configuration of Local Computer Policy**.
- Open **Computer Configuration of Local Computer Policy**.
- Enforce Script rules.
- Create new AppLocker Deny Script rules.
- Create new AppLocker Deny Executable rules.
- Enforce Executable rules.
- Select **Software Restriction Policies** and set the default to **Disallowed**.
- Enforce Executable rules.
- Create new AppLocker Deny Executable rules.

] Explanation: Note: * Use Computer Configuration (not user configuration). * Restrict Access to Programs with AppLocker in Windows 7 If you share a computer and don't want other users accessing certain applications, there is a new feature in Windows 7 that allows you to block them. We restrict what programs other users can access using AppLocker. Under Local Computer Policy go to Computer Configuration Windows Settings Security Settings Application Control Policies AppLocker. Now under AppLocker Properties check the boxes next to Configured under Executable rules then click Ok.



Finally create a Deny Executable rule for each browser you want to block. QUESTION 6 Drag and Drop Questions You support computers that run windows 8 Enterprise. AppLocker policies are deployed. Company policy states that AppLocker must be disabled. You need to disable AppLocker. Which three actions should you perform in sequence? (To answer, move the appropriate actions from the list of actions to the answer area and arrange them in the correct order.)



Answer:



] Explanation: Note: * Before you can enforce AppLocker policies, you must start the Application Identity service by using the Services snap-in console. * The Application Identity service determines and verifies the identity of an application. Stopping this service will prevent AppLocker policies from being enforced. QUESTION 7 Drag and Drop Questions You administer laptops and virtual desktop computers that run Windows 8 and are joined to an Active Directory domain. Your company provides virtual desktop computers to all users. Employees in the sales department also use laptops, sometimes connected to the company network and sometimes disconnected from the company network. You want sales department employees to have the same personal data,

whether they are using their virtual desktop computers or their laptops. You need to configure the network environment to meet the requirements. Which three actions should you perform in sequence? (To answer, move the appropriate actions from the list of actions to the answer area and arrange them in the correct order.)

Answer:

Explanation: Note: Folder Redirection and Offline Files are used together to redirect the path of local folders (such as the Documents folder) to a network location, while caching the contents locally for increased speed and availability. * Folder Redirection enables users and administrators to redirect the path of a known folder to a new location, manually or by using Group Policy. The new location can be a folder on the local computer or a directory on a file share. Users interact with files in the redirected folder as if it still existed on the local drive. For example, you can redirect the Documents folder, which is usually stored on a local drive, to a network location. The files in the folder are then available to the user from any computer on the network. * Offline Files makes network files available to a user, even if the network connection to the server is unavailable or slow. When working online, file access performance is at the speed of the network and server. When working offline, files are retrieved from the Offline Files folder at local access speeds. A computer switches to Offline Mode when: The new Always Offline mode has been enabled The server is unavailable The network connection is slower than a configurable threshold The user manually switches to Offline Mode by using the Work offline button in Windows Explorer Reference: Folder Redirection, Offline Files, and Roaming User Profiles overview QUESTION 8 You manage a network that includes computers that run Windows 8 Enterprise. All of the computers on the network are members of an Active Directory domain. The company recently proposed a new security policy that prevents users from synchronizing applications settings, browsing history, favorites, and passwords from the computers with their Microsoft accounts. You need to enforce these security policy requirements on the computers. What should you do? A. From each computer, navigate to Change Sync Settings and set the Sync Your Settings options for Apps, Browser, and Passwords to Off. B. On the Group Policy Object, configure the Accounts: Block Microsoft accounts Group Policy setting to Users can't add or log on with Microsoft accounts. C. On the Group Policy Object, configure the Accounts: Block Microsoft accounts Group Policy setting to Users can't add Microsoft accounts. D. From each computer, navigate to Change Sync Settings and set the Sync Your Settings option to Off. Answer: B QUESTION 9 You administer a computer that runs Windows 8 Pro. You need to create a backup copy of the computer system drive. The backup copy must support a complete system drive restore to another computer. What should you do? A. Create a system restore point. B. Run the bcdedit /export command. C. Perform a backup to a shared folder by using the wbadmin command with the -allcritical switch. D. Create a system recovery drive. Answer: C QUESTION 10 You manage client computers that run Windows 8 and are part of a workgroup. These computers are configured to use Microsoft Update. Updates are downloaded every day at 10:00 and installed automatically. Users report that their computers sometimes reboot without any interaction. You need to prevent unplanned automatic reboots of the computers. What should you do? A. Enable the Reschedule Automatic Updates scheduled installations policy setting. B. Disable the Re-prompt for restart with scheduled installations policy setting. C. Enable the Automatic Updates detection frequency policy setting. D. Enable the No auto-restart with logged on users for scheduled automatic updates installations policy setting. Answer: A Passing Microsoft 70-688 Exam successfully in a short time! Just using Braindump2go's Latest Microsoft 70-688 Dump:<http://www.braindump2go.com/70-688.html>